



August 6, 2024

Karen Kovacs  
300 W. Baraga Ave  
Marquette, MI 49855

Re: Longyear Realty Corporation Request for Establishment of an Industrial Development District Pursuant to Act 198 of 1974 as Amended

Dear Manager Kovacs,

On behalf of Longyear Realty Corporation, I would like to formally request the establishment of an Industrial Development District at the attached property location.

Able Medical Devices, a subsidiary of Longyear Realty Corporation, plans to move to the above location satisfying the terms of the Development Agreement between Longyear Realty Corporation and the City of Marquette, dated April 6, 2021, and recently extended to April 6, 2025. Able's move to this new location provides the business with new growth opportunities, the ability to retain top talent and new tax revenue for the City of Marquette.

To the extent possible, Longyear Realty Corporation would like to apply for tax abatement incentives through the IDD as they will aid in the expansion of the company. Additionally, Longyear Realty Corporation would like to market the site as a "tech park" to other businesses, providing the same opportunity to use tax abatement to help grow their companies respectively.

We will be working alongside Mary Myers of the Lake Superior Community Partnership and Leo Isleib of the Michigan Economic Development Corporation as we pursue other economic development opportunities for the Able Medical Device relocation. If you have any questions about the Industrial Development District process, please contact Mary Myers.

Thank you for assisting us with this request.

Sincerely,

Dale Dexter  
Director Financial Planning & Analysis  
JM Longyear





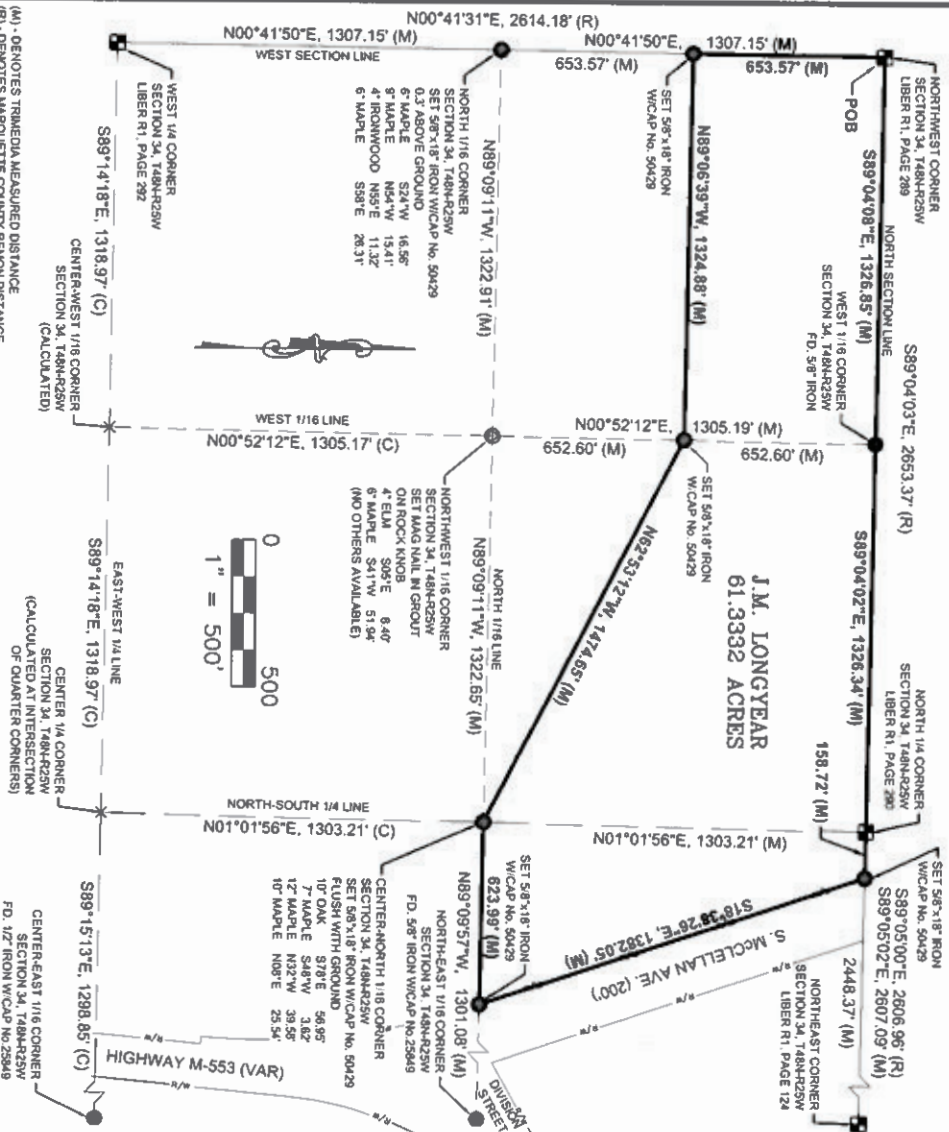


# CERTIFICATE OF SURVEY

PART OF THE N 1/2 OF THE NW 1/4 AND PART OF THE NW 1/4 OF  
THE NE 1/4, SECTION 34, T48N-R25W, CITY OF MARQUETTE,  
MARQUETTE COUNTY, MICHIGAN

## LEGAL DESCRIPTION

A parcel of land being part of the North Half (N 1/2) of the Northwest Quarter (NW 1/4) and part of the Northwest Quarter (NW 1/4) of the Northeast Quarter (NE 1/4), Section 34, T48N-R25W, City of Marquette, Marquette County, Michigan described as:  
Beginning at the Northwest corner of Section 34; thence S89°04'08"E, 1326.85 feet along the North section line to the West 1/16 corner on the North section line; thence S89°04'02"E, 1326.34 feet along the North section line to the North 1/4 corner; thence S89°05'02"E, 158.72 feet along the West section line to the West right of way line of South McClellan Avenue; thence S18°38'26"E, 1382.05 feet along the West right of way line of South McClellan Avenue to the North 1/16 line; thence N89°09'57"W, 623.99 feet along the North 1/16 line to the Center-North 1/16 corner; thence N62°53'12"W, 1474.65 feet to the midpoint on the West 1/16 line between the Northwest 1/16 corner and the West 1/16 corner on the North section line; thence N89°06'39"W, 1324.88 feet to a point on the West section line; thence N00°41'50"E, 653.57 feet along the West section line to the Point of Beginning and containing 61.3332 acres and subject to restrictions, reservations, rights of way and easements of record.



(M) - DENOTES TRIMEDIA MEASURED DISTANCE  
(R) - DENOTES MARQUETTE COUNTY REMON DISTANCE  
(C) - DENOTES CALCULATED DISTANCE

01/10/2021 09:00:00 AM J. Longyear - Land Surveying Design Surveyor Certificate No. 200429



830 WEST WASHINGTON STREET  
MARQUETTE, MICHIGAN 49855  
(906)228-5125

ESCAWABA, MICHIGAN PHOENIX, ARIZONA MARSHALL, MICHIGAN SUPERIOR, WISCONSIN

**SURVEYORS CERTIFICATE:** I hereby certify that I have surveyed and mapped the herein described parcel of land and that the relative positional precision of each corner is within the limits accepted by the practice of professional surveying; and that this survey complies with the requirements of Public Act No. 132, of 1970 as amended.

SCALE: 1"=500'  
APPROVED BY: EJR  
DRAWN BY: SJB

TRIMEDIA ENVIRONMENTAL AND ENGINEERING, LLC BY: <i>Stacey J. Bluse</i> Stacey J. Bluse, P.S. No. 4001050429 DATE: 01/08/2021		BEARING BASIS: MAGNETIC MICHIGAN STATE PLANE NORTH (2111)
NORTH		SEC. TWP. RANGE 34 48N 25W
ENCROACHMENTS: NONE		MUNICIPALITY: CITY OF MARQUETTE

