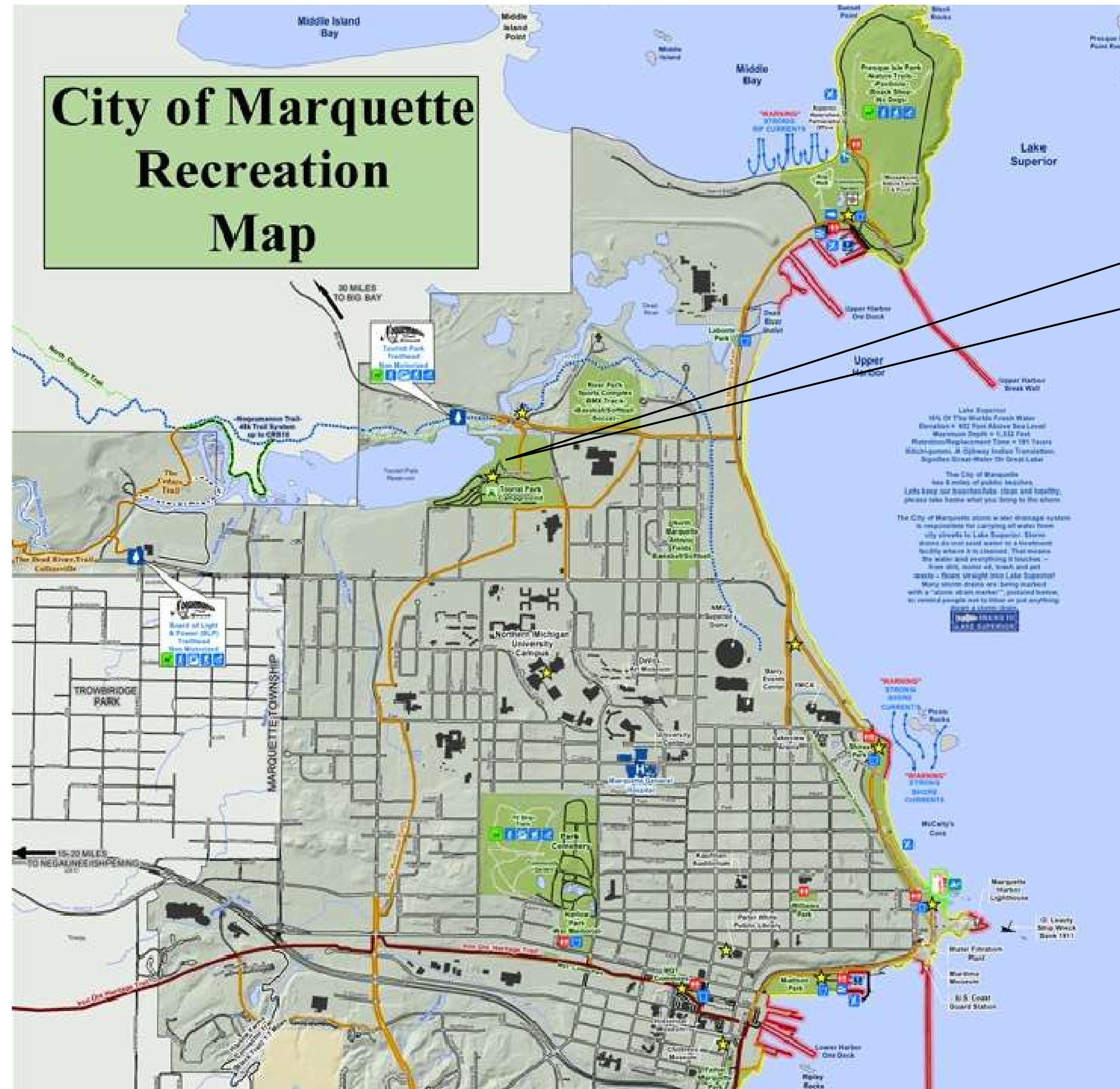


Tourist Park Day Use Playground

RP15 - 0023



PROJECT LOCATION
"TOURIST PARK"



March 1, 2023

Index to the Drawings:

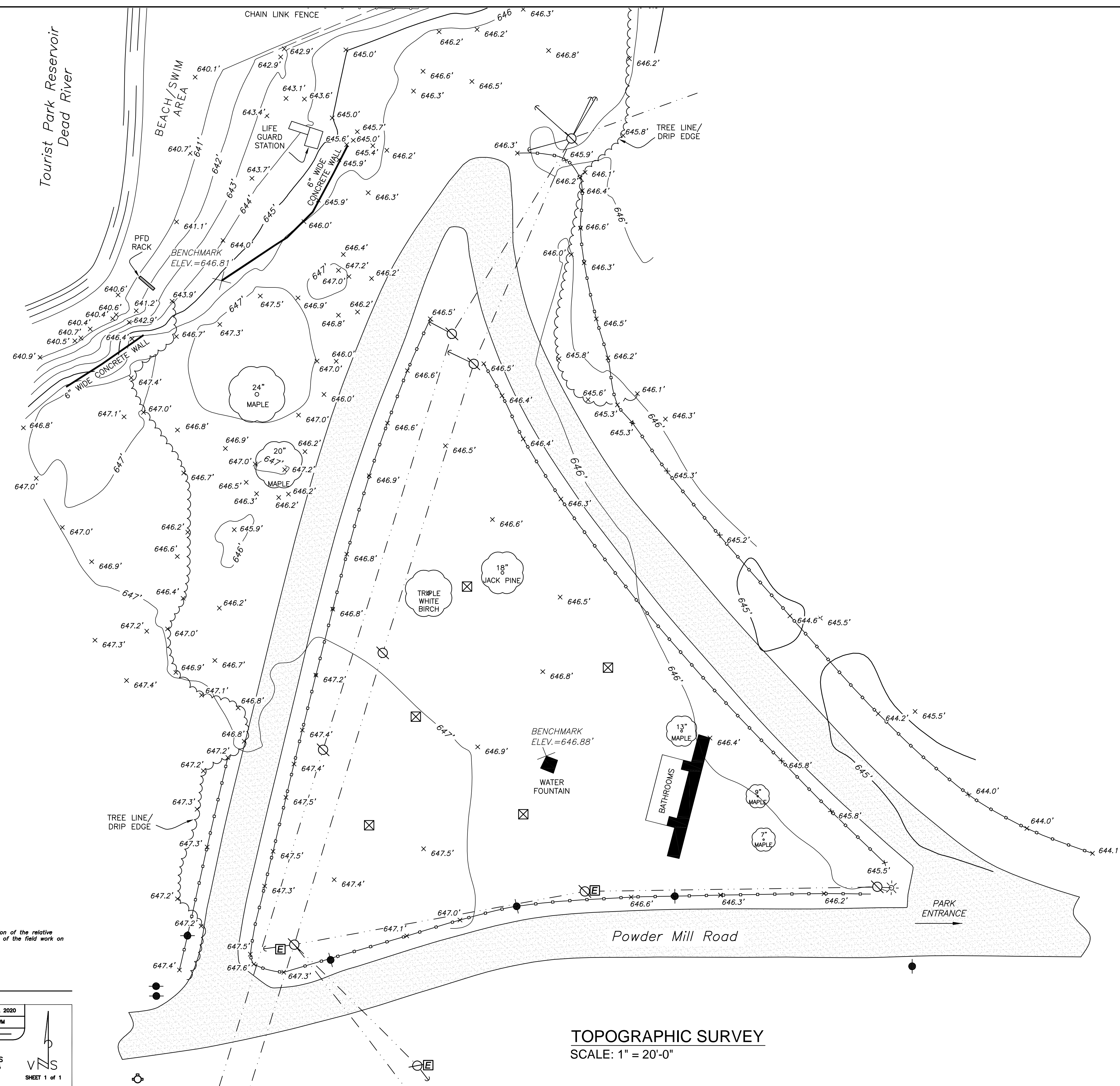
sheet number	description
-	COVER SHEET / LOCATION MAP
1	TOPO SURVEY / SESC PLAN
2	SITE / GRADING PLAN
3	ENLARGED PLAYGROUND PLAN
4	LANDSCAPE / RESTORATION PLAN
5	DETAILS

BIDDING	MARCH 1, 2023
BIDDING	AUGUST 22, 2022
ISSUE/DATE:	
COVER SHEET	



SANDERS & CZAPSKI ASSOCIATES, PLLC
 architecture / landscape architecture / historic preservation
 109 South Front Street / Suite 210 / Marquette, Michigan
 Phone: 906.273.1207 / Fax: 906.273.1208
 www.Sanders-Czapski.com

TOURIST PARK
 DAY USE PLAYGROUND
 MARQUETTE (MARQUETTE COUNTY), MICHIGAN



CERTIFICATION:
 I hereby certify that this Survey Map is a true representation of the relative elevations and topographical features as found at the time of the field work on 28 July 2020.

SIGNED: Glenn C. Van Neste, Professional Surveyor # 27484
 Travis W. Van Neste, Professional Surveyor # 48895

DATE: 28 JUL 2020

SCALE: 1" = 40'

JOB # 220029/201067 **SCALE:** 1" = 40' **DATE:** 28 JUL 2020

(R) RECORDED **(M) MEASURED** **DRAWN BY:** TWV

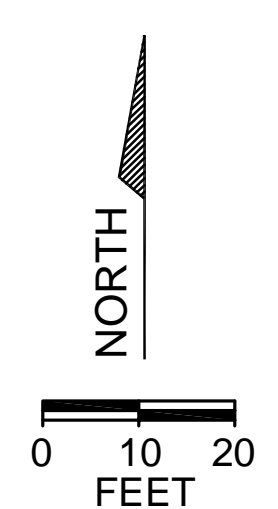
LINE NOT DRAWN TO SCALE

VAN NESTE SURVEYING
 33 YEARS OF PROFESSIONAL SURVEYING SERVICES
 1402 KIMBER AVENUE MARQUETTE, MICHIGAN 49855
 PHONE (906) 226-6241
 www.VanNesteSurveying.com

VNS
 SHEET 1 of 1

TOPOGRAPHIC SURVEY
 SCALE: 1" = 20'-0"

- ELEVATION DATUM:**
 MARQUETTE BOARD OF LIGHT AND POWER TOURIST PARK HYDRO PROJECT
- LEGEND:**
- POWER POLE WITH GUY
 - STREET LIGHT
 - GRILL
 - SIGN
 - ELECTRIC BOX
 - HYDRANT
 - OVERHEAD POWER/ TELEPHONE
 - CHAIN LINK FENCE
 - WOOD POST BARRIER
 - TREE
 - CONTOUR LINE
 - CONCRETE SURFACE
 - ASPHALT SURFACE



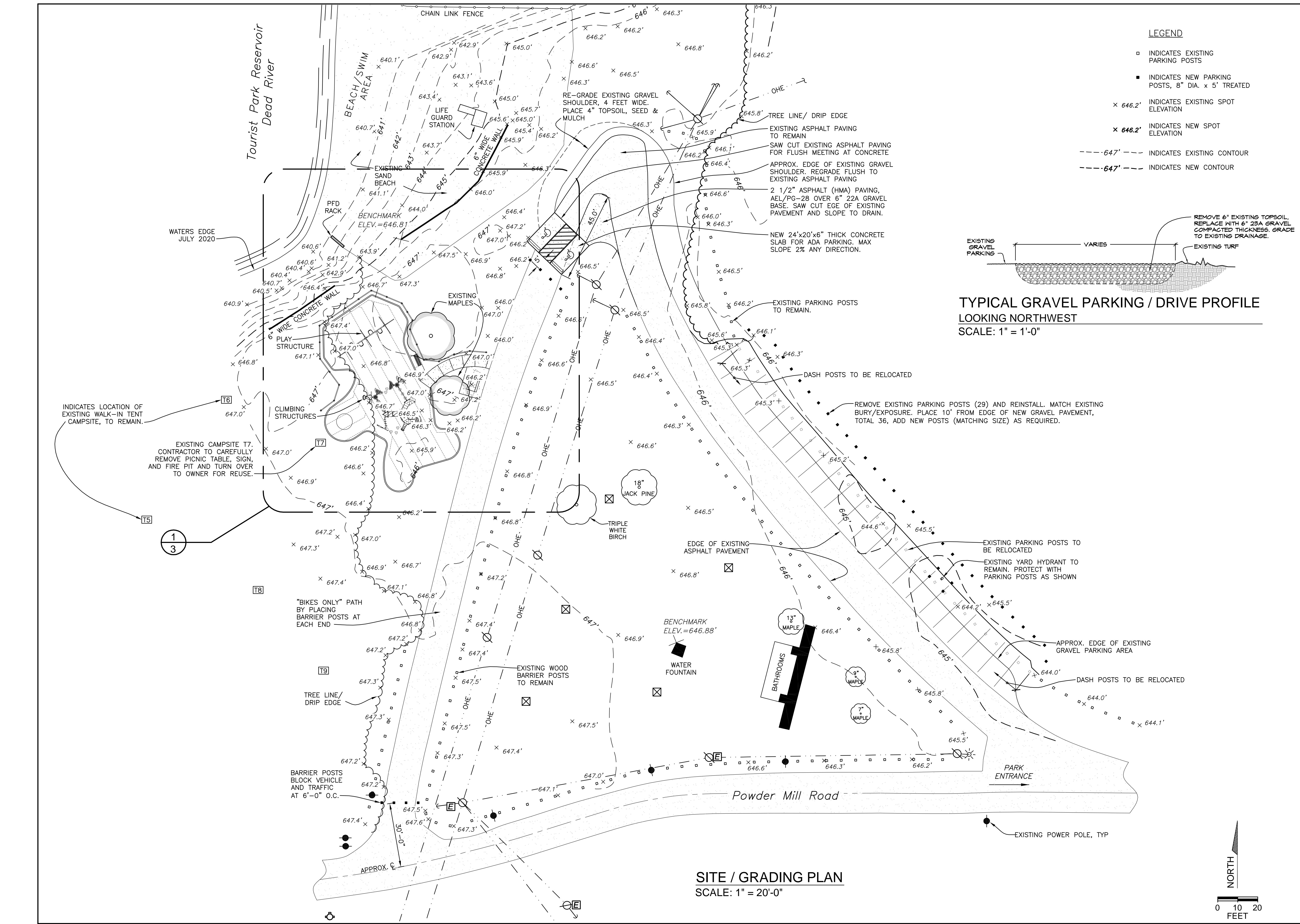
SANDERS & CZAPSKI ASSOCIATES, PLLC
 architecture / landscape architecture / historic preservation

109 South Front Street / Suite 210 / Marquette, Michigan
 Phone: 906.273.1207 / Fax: 906.273.1208
 www.Sanders-Czapski.com

TOURIST PARK
DAY USE PLAYGROUND

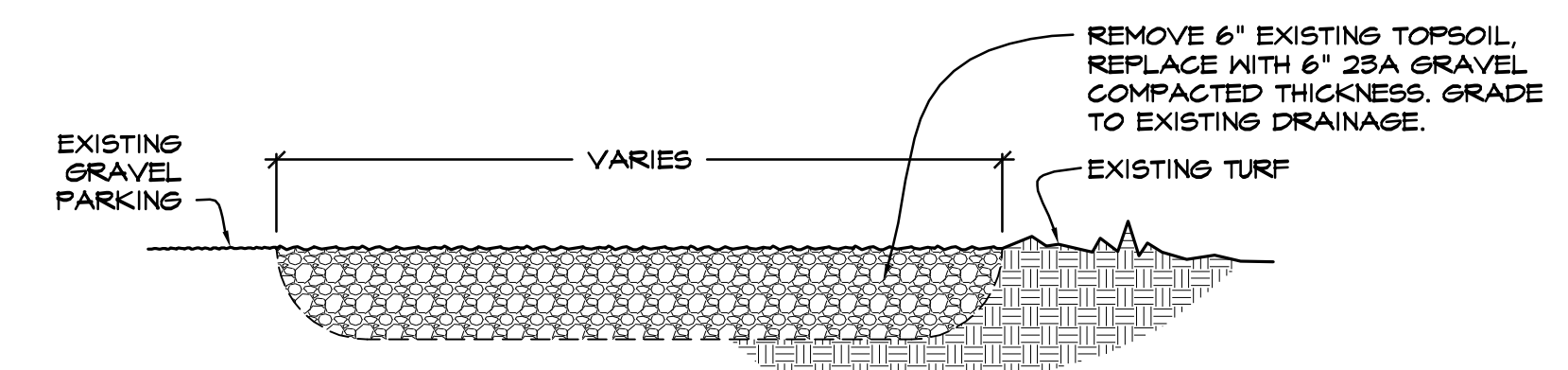
MARQUETTE (MARQUETTE COUNTY), MICHIGAN

BIDDING	MARCH 1, 2023
BIDDING	AUGUST 22, 2022
ISSUE / DATE:	1



SITE / GRADING PLAN
SCALE: 1" = 20'-0"

- LEGEND**
- INDICATES EXISTING PARKING POSTS
 - INDICATES NEW PARKING POSTS, 8" DIA. x 5' TREATED
 - x 646.2' INDICATES EXISTING SPOT ELEVATION
 - x 646.2' INDICATES NEW SPOT ELEVATION
 - - - 647' - - - INDICATES EXISTING CONTOUR
 - - - 647' - - - INDICATES NEW CONTOUR

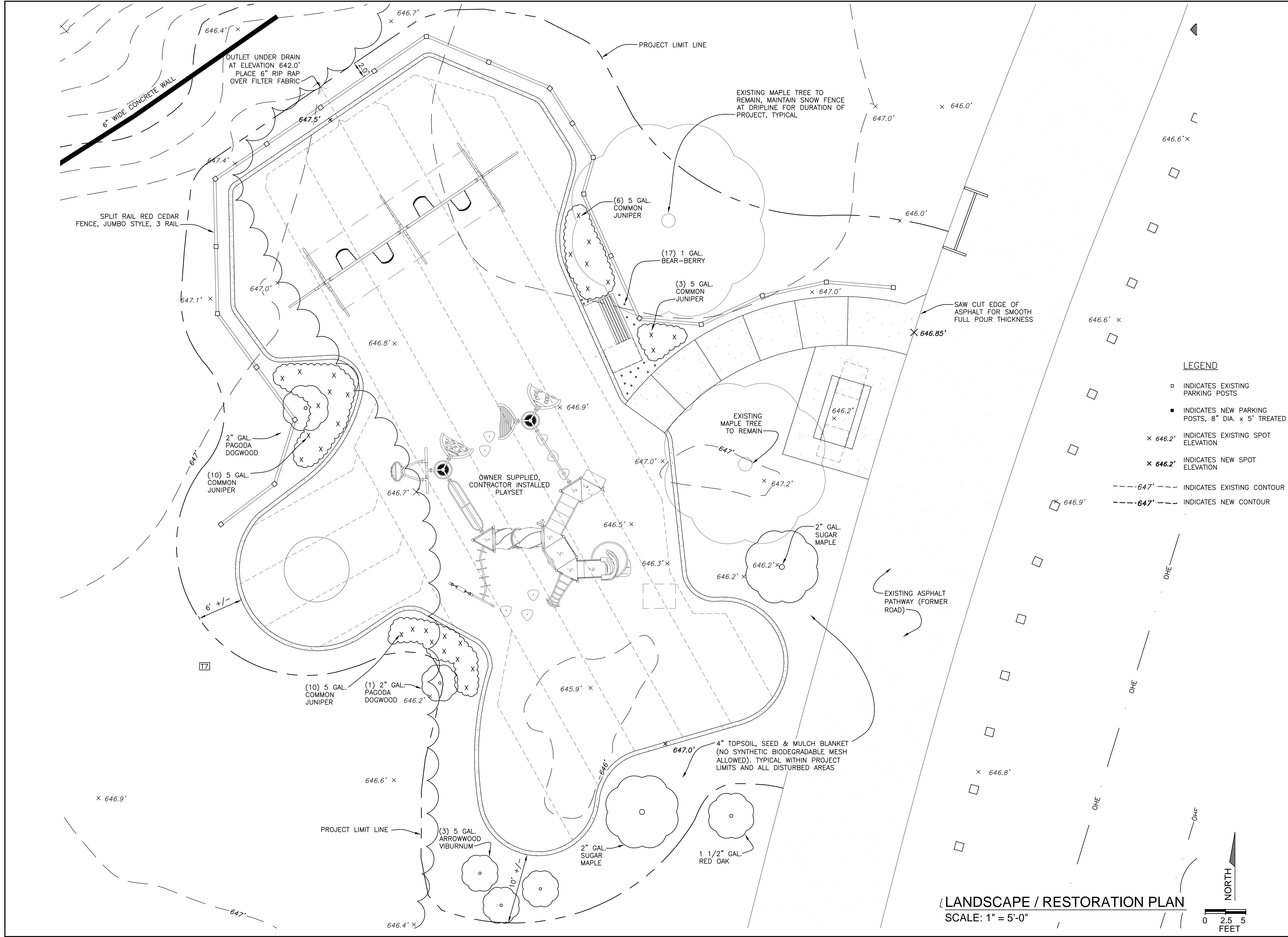


TYPICAL GRAVEL PARKING / DRIVE PROFILE
LOOKING NORTHWEST
SCALE: 1" = 1'-0"

SANDERS & CZAPSKI ASSOCIATES, PLLC
architecture / landscape architecture / historic preservation
109 South Front Street / Suite 210 / Marquette, Michigan
Phone: 906.273.1207 / Fax: 906.273.1208
www.Sanders-Czapski.com

TOURIST PARK
DAY USE PLAYGROUND
MARQUETTE (MARQUETTE COUNTY), MICHIGAN

BIDDING	MARCH 1, 2023
BIDDING	AUGUST 22, 2022
ISSUE / DATE:	
2	



- LEGEND**
- ◻ INDICATES EXISTING PARKING POSTS
 - INDICATES NEW PARKING POSTS, 8" DIA. x 5' TREATED
 - x 646.2' INDICATES EXISTING SPOT ELEVATION
 - x 646.2' INDICATES NEW SPOT ELEVATION
 - - - 647' - - - INDICATES EXISTING CONTOUR
 - - - 647' - - - INDICATES NEW CONTOUR

LANDSCAPE / RESTORATION PLAN
 SCALE: 1" = 5'-0"



SANDERS & CZAPSKI ASSOCIATES, PLLC
 architecture / landscape architecture / historic preservation
 109 South Front Street / Suite 210 / Marquette, Michigan
 Phone: 906.273.1207 / Fax: 906.273.1208
 www.Sanders-Czapski.com

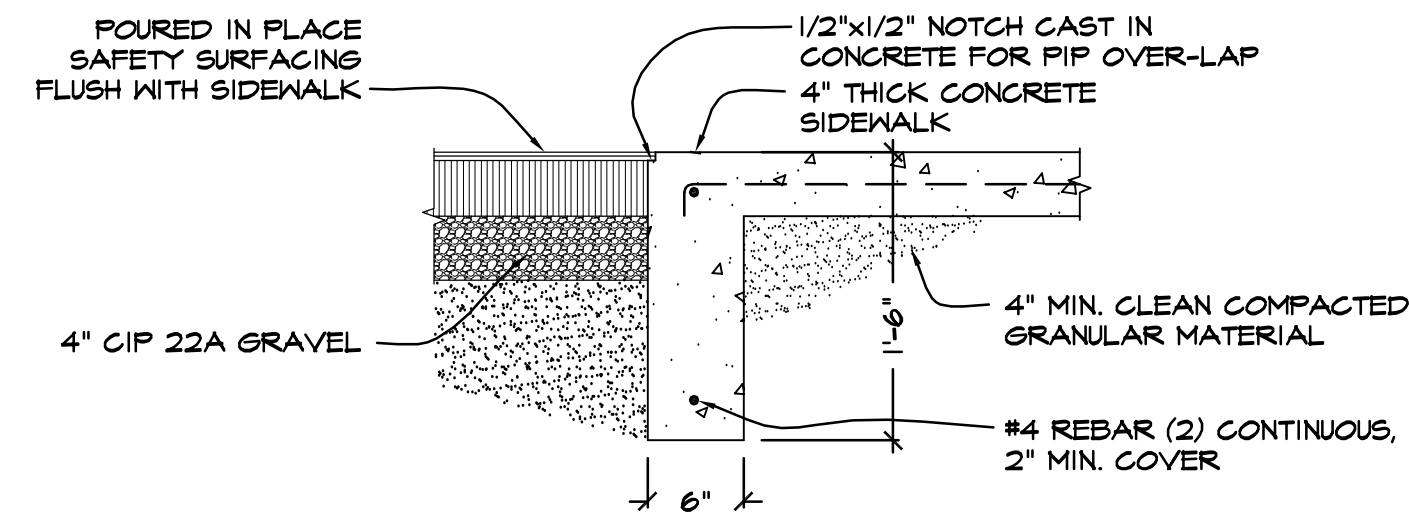
TOURIST PARK
DAY USE PLAYGROUND

MARQUETTE (MARQUETTE COUNTY), MICHIGAN

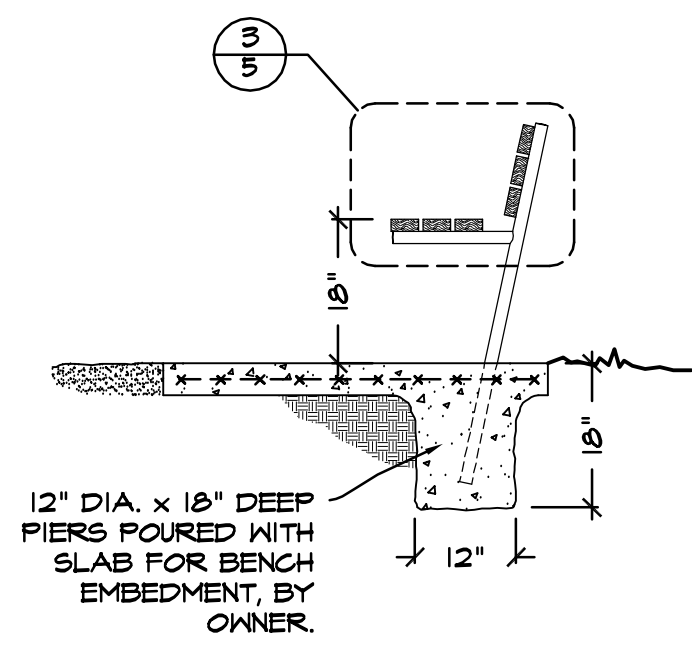
BIDDING MARCH 1, 2023

BIDDING AUGUST 22, 2022

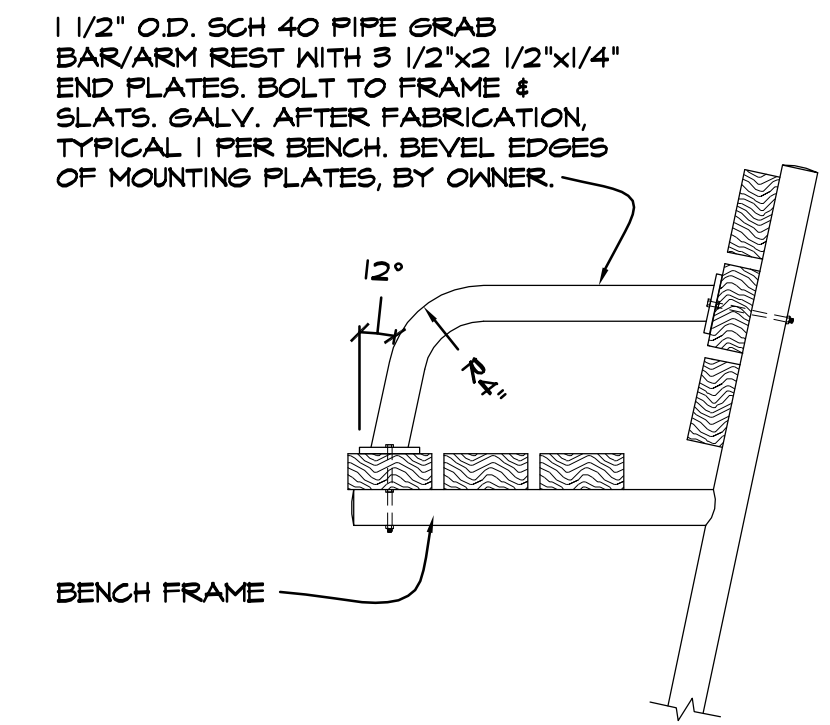
ISSUE / DATE:



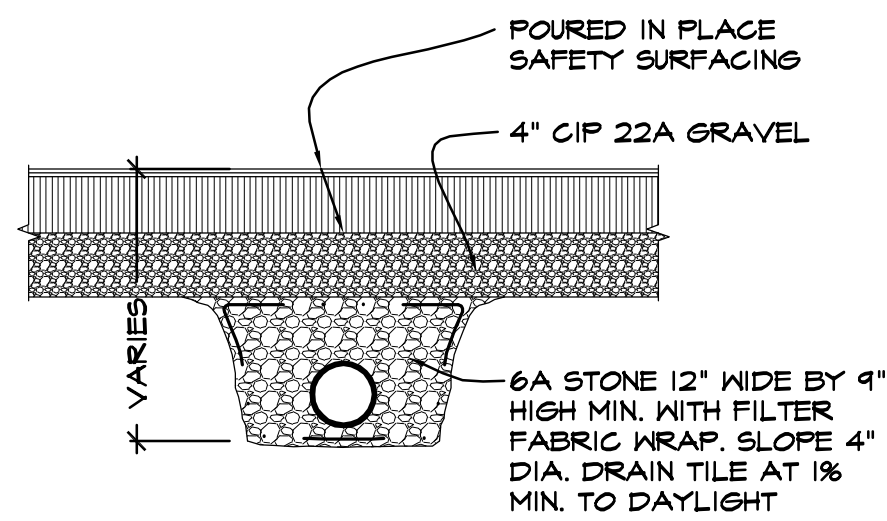
1 SIDEWALK / PIP DETAIL
3 SCALE: 1" = 1'-0"



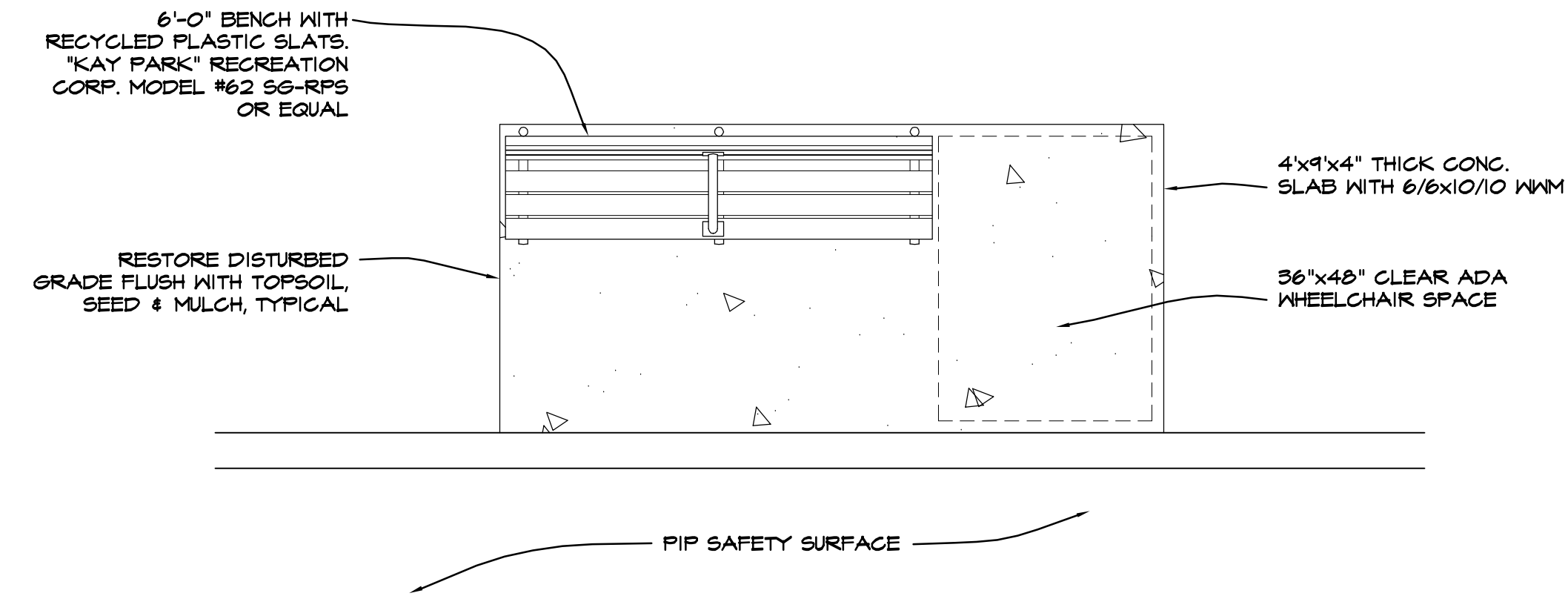
2 SECTION THRU BENCH
3 SCALE: 1/2" = 1'-0"



3 DETAIL OF FABRICATED RAIL
5 SCALE: 1 1/2" = 1'-0"



4 TYPICAL DETAIL - UNDER DRAIN
3 SCALE: 1" = 1'-0"



ENLARGED PLAN - BENCH
SCALE: 1/2" = 1'-0"