

---

# Presque Isle Historic Bandshell Proposal

---

2.14.2024



# CONTENTS

STATEMENT OF INTEREST \_\_\_\_\_ 03

PROJECT TEAM OVERVIEW \_\_\_\_\_ 04

AWH FIRM PROFILE \_\_\_\_\_ 05

AWH - ALEX HAECKER \_\_\_\_\_ 06

AWH - NAMDI ALEXANDER \_\_\_\_\_ 07

TNC ORDWAY PRAIRIE PAVILLION \_\_\_\_\_ 08

MISSION CREEK MEMORIAL SPACE \_\_\_\_\_ 09

MOONACY \_\_\_\_\_ 10

CRANE/NIMBUS THEATER \_\_\_\_\_ 11

STRIKE THEATER \_\_\_\_\_ 12

SOLAR/PAVILLION PROJECT EXAMPLES \_\_\_\_\_ 13

SCHULER SHOOK EXAMPLES \_\_\_\_\_ 14-16

URBAN ECOSYSTEMS EXAMPLES \_\_\_\_\_ 17-19

CORE 4 ENGINEERING, INC. EXAMPLES \_\_\_\_\_ 20-21

FEES \_\_\_\_\_ 22

PROJECT TIMELINE \_\_\_\_\_ 23

2.14.2024

**Presque Isle Park Advisory Committee  
City of Marquette  
300 W. Baraga Ave.  
Marquette, MI 49855**

Dear Members of the Presque Isle Park Advisory Committee,

We are writing to express our enthusiasm for the opportunity to submit a proposal for the design of a new bandshell in Presque Isle Park in Marquette, Michigan. We have assembled a terrific team of well-qualified consultants and designers with a deep understanding of the program requirements, the area's unique characteristics, and the historical significance of Presque Isle Park. We are confident in our ability to deliver a design that exceeds your expectations. Additionally, our team has a deep love for Lake Superior and the surrounding natural areas that are so full of beauty and wonder. We hold a high regard for the many complex cultural narratives that are embedded in the land and soil. This has allowed us to successfully work in many areas around the lake and with communities and tribes who call it their home. Additionally, Alex's family has called Madeline Island his home for over 100 years and has sailed into Marquette many times, giving AWH a deeper insight into the area. Although AWH has Minnesota as a home base, we consistently find ourselves working around the greatest lake and hope to do so again.

Presque Isle Park holds a special place in the hearts of Marquette residents and visitors alike. Its natural beauty and rich history make it a cherished community asset. As architects and designers, we recognize that this space needs to be both shared and preserved. This calls for a balance between Frederick Law Olmsted's recommendation to leave it alone and the desire for people to learn and explore and play. To strike this balance requires intentional vision and design to guide the visitor's experience while respecting the natural landscape and cultural sensitivities of an area.

In developing our proposal, we will draw inspiration from Frederick Law Olmsted's recommendations for the park. Olmsted, a pioneer in the field of landscape architecture, emphasized the importance of preserving natural landscapes and creating spaces that enhance the visitor's experience of the natural environment. We are committed to following in his footsteps by creating a design that harmonizes with the natural surroundings of Presque Isle Park.

Designing an outdoor performance facility within natural surroundings presents unique challenges, but we see these challenges as opportunities for innovation and creativity. By carefully integrating the bandshell into the landscape, using sustainable materials, and incorporating elements that enhance the acoustics and sightlines, we are confident that the end result will be a facility that not only meets the program requirements but also enhances the beauty and tranquility of Presque Isle Park.

In considering the programming for the new bandshell, we will take into account the diverse range of events and performances that will take place at the venue. From concerts to theatrical productions to weddings, the bandshell must be flexible enough to accommodate a variety of performances while also providing a comfortable and inviting space for the audience. Working with a world-renowned theater consultant will help make sure that we are committed to a high-performance space.

Finally, we are deeply aware of the historical significance of Presque Isle Park with the local indigenous tribes. We are committed to honoring this history in our design, ensuring that the new bandshell respects and reflects the cultural heritage of the area.

We look forward to the opportunity to discuss our ideas further and to collaborate with you on this exciting project. Thank you for considering our proposal. We are confident that our collective experience, creativity, and passion for design make our team the ideal candidate to help bring this vision to life.

Thanks for your consideration.

Sincerely,



Alex Haecker, AIA, NCARB  
alex@awharchitects.com | 612-558-5383

---

# PROJECT TEAM OVERVIEW

## ARCHITECTURE, COMMUNITY ENGAGEMENT

### AWH ARCHITECTS

12 East 25th street  
Minneapolis MN 55404  
612.558.5383  
[www.awharchitects.com](http://www.awharchitects.com)



---

## THEATER, LIGHTING AND SAFETY

### SCHULER SHOOK

219 Main Street SE, Suite 200  
Minneapolis, MN 55414  
<https://schulershook.com/>



Schuler Shook is an internationally recognized design firm that has earned a reputation for excellent Architectural Lighting Design, Theatre Planning and Audio Video Design. Our work ranges from epic to intimate, transcendent to practical, and across all project types on nearly every continent. What unites our work in these disciplines is a collaborative spirit and a commitment to compelling, innovative and sensitive designs distinctly and masterfully tailored to the needs of the project.

---

## LANDSCAPE DESIGN

### URBAN ECOSYSTEMS INC.

2500 University Ave W  
St Paul, MN 55114

<https://www.urbanecosystemsinc.com/>



Urban Ecosystems Inc. is a critical design practice of landscape architects, planners, and designers focused exclusively on enriching the vibrance of these urban ecosystems. We are curious about different types of communities and landscape settings. This provides an opportunity to work among a wide range of landscape scales and with a variety of communities and project types. Consistent throughout these projects is our belief that each landscape deserves its own story. In response, our approach is grounded in listening with rigor to discover, reveal, and interpret the latent characteristics of the landscape through space, material, and detail.

---

## ENGINEERING

### CORE 4 ENGINEERING, INC.

12308 Corporate Pkwy # 450  
Mequon, WI 53092

<https://www.core4engineering.com/>



CORE 4 Engineering was founded by Matthew Christianson, P.E., S.E. in late 2013 with a goal of creating an engineering firm that works with architects, contractors and building owners by listening to their needs and project vision, and executing that vision. CORE 4 has since assembled a team of experienced engineers, designers and support staff that have a like-minded philosophy putting the Client first and NEVER saying "We Can't Do That". We value the team approach internally and externally, listening to alternative ideas & concepts to provide the best solution possible.

# AWH FIRM PROFILE

Since 2011, AWH Architects has taken on a wide range of architectural projects from our office in the Whittier neighborhood of Minneapolis. The unifying threads between each are client-specific solutions and the focus on our 5 core values: Energy, Water, Reuse, Social Equity, and Pragmatism.

AWH Architects strives to design equitable and accessible spaces by integrating multiple narratives. We advocate for a concerted effort to bring diverse voices and skill sets to the table. This allows us as designers to navigate clients from all walks of life through entitlements to achieve goals that support social, environmental and economic justice.

At AWH, we believe that the design of our physical spaces affects the way we interact with one another as humans. Design can shift our mindset and create spaces of safety, comfort and joy. It is more than functional space-planning or choosing paint colors, the power of architecture is its capacity to create a comprehensive space.





**PRINCIPAL**

**ALEX HAECKER, AIA NCARB**

Alex Haecker has over 25 years of professional experience in design, architecture, historic preservation, adaptive reuse and rehabilitation. Alex has worked on a wide array of projects during the course of his career, from single family homes and remodels to large multi-family affordable housing, all of which have the common thread of seeking diversity, equity and inclusion both for the users and also the built environment. Along with his architecture practice he is deeply committed to serving the community and has served on a number of non-profit boards and as a Commissioner on the Minneapolis Heritage Preservation Commission for 6 years. This dedication, both professionally and personally, affords him the extensive knowledge of practicing architecture from all different sides and perspectives. His work encompasses residential, municipal, non-profit, educational and corporate clients nationwide.

**SPECIFIC PROJECTS EXPERIENCE**

- TNC ORDWAY PRAIRIE PAVILLION, Glenwood, MN
- MISSION CREEK MEMORIAL SPACE, Fond du Lac, MN
- MOONACY, Plymouth, MN 2018
- EDISON HIGH SCHOOL GREEN CAMPUS, Minneapolis, MN 2018
- CRANE/NIMBUS THEATER, Minneapolis, MN 2016
- STRIKE THEATER, Minneapolis, MN 2016
- NOKOMIS SOLAR PAVILLION, Minneapolis, MN 2016
- TINY DINER SOLAR PAVILLION, Minneapolis, MN 2015
- ST. JAMES SOCIAL, Bayfield, WI
- BAYFIELD ART CENTER, Bayfield, WI
- DEER PARK RESIDENTIAL DEVELOPMENT, Bayfield, WI
- HORIN LAKE HOME, Crandon, WI
- LOCKE LAKE HOME, Crandon, WI
- HERMITS HOVEL, Lake Tomahawk, WI
- THOMPSON LAKE TOMAHAWK HOUSE, Lake Tomahawk, WI
- CAMP JOHNSON, Lac du Flambeau, WI

**EDUCATION**

1999 Masters Of Architecture  
University Of Pennsylvania Philadelphia, Pa

1992 Bachelor Of Arts - Studio Arts  
University Of Minnesota. Minneapolis, Mn

**REGISTRATION**

MINNESOTA , WISCONSIN, MICHIGAN

**AFFILIATIONS**

Commissioner - Minneapolis Heritage Preservation  
Commission 2010-2015

**JUROR**

INFILL Philadelphia 2010

**ADVISOR**

Shoreham Advisory Committee  
Great City Design Team Minneapolis, MN

**NON-PROFIT**

Past Board Member - In the Heart of the Beast Puppet Theater  
Past Board Member - Madeiline Island Music Camp  
Past Chairman - Friends of the Eastern State Penitentiary Park

**MEMBER**

AIA, NCARB

**SELECTED HONORS AND AWARDS**

- 2021 - AIA MN Commendation for Excellence in Design for Well-being (Avivo Village)
- 2018 - Preservation Alliance of Minnesota Merit Award (Maytag Building)
- 2018 - Contract Design Interiors Award for Historic Preservation (Hewing Hotel)
- 2017 - Minneapolis Heritage Preservation Award for Historic Restoration, Rehabilitation, or Adaptive Reuse Project (Hewing Hotel)
- 2017 - Preservation Alliance of Minnesota Honor Award (Hewing Hotel)
- 2007 - AIA Honor Award
- 2007 - AIA MN Honor Award
- 2007 - National Trust for Historic Preservation Award
- 2007 - Urban Land Institute Award for Excellence



PROJECT DESIGNER

NAMDI ALEXANDER

Namdi Alexander has over 10 years of architecture and design experience. During that time, he has worked as a passionate advocate for sustainable design and construction practices within various market sectors. He finds the unique challenges of historic rehabilitation and adaptive-reuse projects rewarding, as they breathe new life into existing structures. Namdi is also committed to improving access to design professionals in our communities by spearheading outreach and engagement efforts, and volunteering as a design mentor for high-school students. In addition to his role as a mentor, Namdi serves as an adjunct instructor at the University of Minnesota, where he teaches and develops the curriculum for Undergraduate Design Studios.

Namdi believes empathy is essential to the design process and that thoughtful design can improve lives. As a designer, he is committed to collaborating with clients to find innovative and responsible design solutions that align with their project objectives, while contributing to the betterment of the world around us.

SPECIFIC PROJECT EXPERIENCE

- RICE LAKE ELDER VILLAGE, Rice Lake, MN 2024
- WHITE EARTH TINY HOMES DEVELOPMENT, WEN
- SANCTUARY LOFTS, Minneapolis, MN 2024
- FRANK LLOYD WRIGHT ADDITION, Minneapolis, MN
- THOMPSON LAKE TOMAHAWK HOUSE, Lake Tomahawk, WI
- \*WAKE TECH PUBLIC SAFETY SIM. CTR, Raleigh, NC 2024
- TAP-IN EVENT CENTER, Minneapolis, MN 2023
- \*HISTORIC FORT SNELLING AT BDOT, St. Paul, MN 2022
- \*MILLWORK LOFTS, Minneapolis, MN 2017
- \*PILLSBURY A-MILL LOFTS, Minneapolis, MN 2015
- \*SCHMIDT ARTISTS LOFTS, St. Paul, MN 2014

\* Work completed at another firm

EDUCATION

- 2014 Masters Of Architecture  
University of Minnesota, Minneapolis, MN
- 2011 Bachelor Science in Architecture  
University of Minnesota, Minneapolis, MN

MEMBER

AIA Associate

TEACHING

- 2022 - Current, Adjunt Design Instructor @ U of M CDes
- 2018 & 2019 - NOMA Teen Mentor for Workshop

PRO-BONO / COMMUNITY ENGAGEMENT

- 2015 - Cofounded BKV Workshop
- 2018 - Cofounded LAD Groundwork

SELECTED HONORS AND AWARDS

- 2014 - Clarence Wigington Scholar - AIA Minnesota
- 2011 - Sandy Ritter Scholar - RSP Architects

# AWH PROJECT EXAMPLE

---

## TNC ORDWAY PRAIRIE PAVILLION GLENWOOD, MN

---

Estimated Completion Summer 2024

---

Located in the heart of Glenwood, Minnesota, the Ordway Prairie Pavilion stands as a testament to The Nature Conservancy's commitment to education and ecological preservation. Commissioned to create a gathering space, this 600-square-foot pavilion is not just a structure; it's a bridge between knowledge and nature.

Designed as an educational haven, the pavilion beckons school groups, hikers, and picnickers to delve into the intricacies of the glacial terrain and the remarkably preserved ecosystem of the Ordway Prairie. Here, visitors become explorers, unraveling the mysteries of the land in an immersive and socially enriching environment.

The pavilion's crowning glory is its folded roof plane—a graceful wing that hovers over the prairie like a guardian of knowledge. This architectural marvel not only provides shelter but also mirrors the hummocky geology of the region. Each fold tells a story, connecting the built environment with the undulating landscape that inspired it.

Crafted with a Cor-Ten steel skeleton, the pavilion seamlessly integrates with its surroundings. The choice of material ensures a natural patina over time, allowing the structure to evolve in harmony with the prairie. As the Cor-Ten steel weathers, it becomes a living canvas, blending and aging gracefully in sync with the landscape.

Beyond its architectural finesse, the pavilion is a lesson in water stewardship. Collected from the roof, water becomes a silent educator. Guided by a commitment to sustainability, the runoff is directed to a nearby gabion cage filled with locally harvested fieldstone. Here, water undergoes a transformative journey, aiding in infiltration back into the soil while preventing excess erosion.

Ordway Prairie Pavilion transcends its physical existence; it's a symphony where social interactions harmonize with environmental stewardship. It's a place where knowledge blossoms, and the spirit of exploration thrives. Visitors don't just witness nature; they become part of its ongoing narrative, fostering a deep sense of connection and responsibility.



# AWH + URBAN ECOSYSTEMS PROJECT EXAMPLE

## MISSION CREEK MEMORIAL SPACE

Fond du Lac, MN

Estimated Completion 2025

Mission Creek is a project aimed at honoring the legacy of the Historic Fond du Lac Cemetery through the creation of a memorial sculpture and gathering space adjacent to the site. Initiated as part of the mitigation efforts linked to the ongoing redesign of Highway 23, this project, led by AWH Architects and Urban Ecosystems, represents a collaborative endeavor committed to preserving cultural heritage and fostering community connection.

Since its inception, the project has undergone meticulous development, with a primary focus on incorporating feedback from the Fond du Lac community and ensuring respectful treatment of the cemetery site. This dedication to inclusive design and sensitivity to cultural significance underscores the project's commitment to authenticity and reverence.

Central to the design is a striking memorial sculpture inspired by Anishinaabe traditions and symbology. The seven-column tradition is represented in the design, symbolizing the seven teachings of the Ojibway people: love, respect, bravery, honesty, humility, truth, and wisdom. Evoking the wings of an eagle and the ceremonial feather fans of traditional dancers, the sculpture symbolizes the spiritual connection between the physical and spiritual realms.

In addition to the sculpture, the project includes thoughtful landscaping, such as the realigned spring channel and "Mother Gardens," which aim to restore the natural environment and provide a tranquil setting for reflection. The Nibi Space, adorned with seven stones arranged in a circle, offers a contemplative space for individuals and small groups to honor and connect with their ancestors.

Furthermore, the gathering space features amenities like an inner seat bench, fire pit, and open eastern edge, fostering intimate gatherings and enhancing connections with the land and water. The use of durable materials, such as Corten Steel, ensures longevity and minimal maintenance, reflecting a commitment to sustainability and longevity.

Overall, Mission Creek stands as a testament to the power of community collaboration, cultural preservation, and respectful commemoration. This will be a living tribute to the enduring legacy of the Fond du Lac community and their profound connection to the land and ancestors.



# AWH PROJECT EXAMPLE

---

## MOONACY PLYMOUTH, MN

2018

---

Moonacy is a 3200 SF masterpiece seamlessly integrated into a late 1950s house in the western suburbs of Minneapolis. This project, driven by values of energy, social, and water, transforms the dwelling into a harmonious blend of aesthetics, functionality, and environmental consciousness.

The addition introduces a 3-car garage and a spacious music room tailored for the country songwriter owner. Positioned behind the existing house, the new structure rises to a breathtaking 22-foot ceiling, creating an expansive ambiance. A strategically designed wall of triple-paned glass windows frames panoramic views of the courtyard, koi pond, and the tranquil lake beyond.

Every element of Moonacy's design is deliberate. Angled walls, exposed wood, and metal trusses contribute not only to the visual allure but also serve a functional purpose. The music room, with its design finesse, becomes a space engineered to amplify sound, offering a haven for artistic inspiration. Simultaneously, the architecture harnesses passive solar energy, reflecting the commitment to sustainable living.

Beyond the structural brilliance lies a profound understanding of the social aspect of living. Moonacy is a haven for connection. The thoughtful design encourages inhabitants to gather, share music, and revel in the natural beauty surrounding them. The courtyard, with its picturesque views, becomes a stage for shared moments and social bonds.

The inclusion of a koi pond adds a touch of tranquility to Moonacy. This water feature isn't just an aesthetic choice; it embodies the water value, creating a serene oasis that harmonizes with the natural environment. It's a testament to the project's commitment to incorporating sustainable elements that enhance both living spaces and the ecosystem.



# AWH PROJECT EXAMPLE

---

## CRANE/NIMBUS THEATER MINNEAPOLIS, MN

2016

---

The Crane/Nimbus Theater, an initiative of NE Minneapolis-based theater ensemble nimbus theatre, redefines the theatrical landscape by serving as more than just a performance venue. Completed in 2016, The Crane was conceived as a dynamic resource for ensemble theater companies and those creating innovative works in the Twin Cities. With a commitment to fostering collaboration and shared spaces, The Crane addresses the unique needs of theater companies involved in the various stages of production.

AWH embarked on the architectural transformation of Suite 130 at 2303 Kennedy Avenue NE, Minneapolis, MN, spanning approximately 7,000 SF. This conversion aimed to birth an Educational Arts Center, featuring a thoughtfully designed layout comprising a lobby, loading dock area, dressing rooms, storage, two studios with stage and seating areas (48 and 110 seats), a scene shop, and restroom facilities.

The scope of AWH's work encompassed comprehensive professional services, beginning with collaborative consultations with the client to refine project requirements and program specifics. AWH navigated zoning and entitlement considerations, ensuring seamless adherence to regulations. As part of the meticulous process, AWH completed and updated As-Builts, developed a Concept Design based on layout discussions and client input. The journey continued with Design Development, Construction Documents for permitting, and culminated in Construction Administration, ensuring a harmonious realization of The Crane/Nimbus Theater's transformative vision. Deliverables included a thorough Program, Zoning, and Code Analysis, alongside the production and delivery of design development and construction documents, all supervised by AWH's commitment to excellence.



# AWH PROJECT EXAMPLE

---

## STRIKE THEATER MINNEAPOLIS, MN

2016

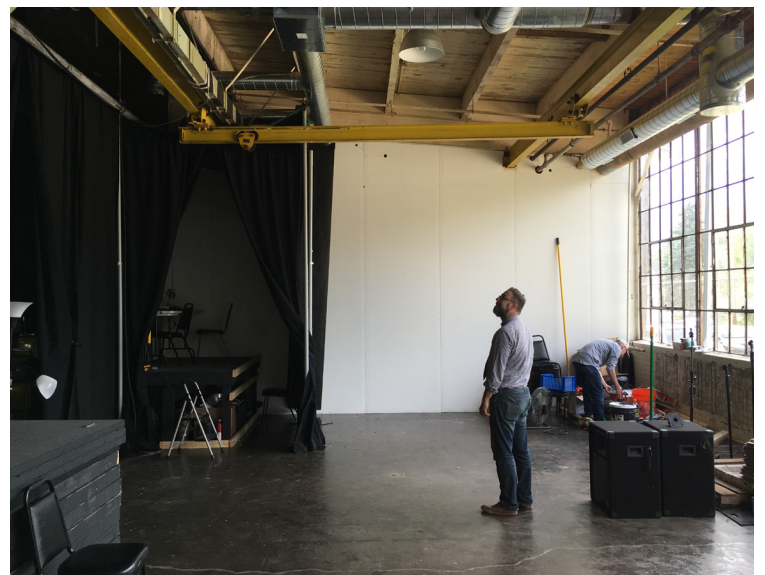
---

Strike Theater, located in Minneapolis, MN, stands as a vibrant testament to the rich tapestry of Twin Cities' sketch comedy, storytelling, and spoken word. Established by Allison Broeren, Director of Word Sprout, and improv virtuosos Mike Fotis and Joe Bozic, the theater embodies a fusion of creativity and community engagement.

In collaboration with AWH, the architectural metamorphosis of Space 176 in the Thorp Building unfolded, encompassing approximately 2,500 SF. AWH meticulously undertook a comprehensive range of services to breathe life into the performance/theater space. The project commenced with client consultations to distill refined project requirements, followed by an adept update of As-Builts.

The evolution of the design concept seamlessly integrated previous layouts and discussions, resulting in a unique and functional space. AWH's scope of work extended to crafting detailed Construction Documents for building permits, with structural considerations addressed through responsible oversight and coordination.

Furthermore, AWH played a pivotal role in the meticulous orchestration of the project's construction phase. This included assistance in contractor selection, facilitating the bidding process, and ensuring a harmonious synergy between the design vision and on-site execution. The journey from conceptualization to completion was marked by collaborative ingenuity, transforming Space 176 into the dynamic and inviting Strike Theater that now graces Minneapolis.



# AWH SOLAR/PAVILLION PROJECTS EXAMPLES

---

## EDISON HIGH SCHOOL GREEN CAMPUS MINNEAPOLIS, MN

2018

Edison High School was transformed into a model green campus with state-of-the-art energy efficiency and storm water systems. Utilizing neglected space adjacent to their sports facilities sustainability was pursued to the utmost with this addition. A new entry and educational experience were created with a massive **500 kW** solar array, storm water collection and treatment, community garden and greenhouse, and concession stand. In addition to creating a place to gather and pass through, these systems are designed to be educational tools for students, visitors, and the neighborhood, helping raise the next generation of environmental stewards.



---

## NOKOMIS SOLAR PAVILION MINNEAPOLIS, MN

2016

Situated between the bath house and the widely popular Sandcastle eatery, the Nokomis Solar Pavilion provides an area of respite while also generating energy. The **7kW** Solar Array sits atop a custom designed galvanized steel structure and frames the entry onto the beach. Beach goers and visitors alike can utilize the picnic benches and enjoy a bit of shade while marveling over the shadow patterns cast by the array. The Nokomis Solar Pavilion was one of five photo voltaic solar power projects AWH completed for the Minneapolis Park and Recreation Board made possible by the Xcel Energy Renewable Development Fund.



---

## TINY DINER SOLAR PAVILION MINNEAPOLIS, MN

2015

The Tiny Diner, the latest restaurant concept by the famed Minneapolis restaurateur Kim Bartman, sought a different level to the locavores, farm to table, and regionalism wave that is sweeping the restaurant scene—take it off of the grid and grow a majority of the produce on the dense, urban, and used to-be contaminated site. The Tiny Diner, with its **40 kW** solar canopy, collects power from the sun, as well as rainwater, and directs it to the site's various gardens. At the same time, it covers the large outdoor seating area. The Tiny Diner sets a new bar for the Minneapolis restaurant scene.



# SCHULER SHOOK PROJECT EXAMPLE

---

## TOWN GREEN BANDSHELL MAPLE GROVE, MN

2010

---

This waterfront Bandshell anchors a new town green, enhancing a growing suburb's regional presence. Innovative architecture, landscaping and lighting provide a multifunctional facility for programmed events and non-performance related use.

At night, the bandshell comes alive with color and light, creating a unique visual identity that attracts pedestrians while providing safety and security. A 30-minute light show runs continuously from sundown to late evening. The energy-efficient color-changing LED up lights fade from color to color at varying speeds. The entire roof can change at once, or morph its color from one side to the other. By carefully balancing the composition of the roof and sidewalls, the architecture is revealed in different ways throughout the show.

The bandshell is equipped with an inventory of portable theatrical fixtures to support small performances.

---

### SCOPE OF WORK:

Theatre planning and architectural lighting design for a new bandshell for community events.



# SCHULER SHOOK PROJECT EXAMPLE

---

## AMERICAN PLAYER THEATRE HILL THEATRE

SPRING GREEN, WI

2019

---

American Players Theatre includes Hill Theatre, a 1,089-seat thrust stage amphitheatre, and indoor Touchstone Theatre. Hill Theatre, the second largest outdoor theater in the U.S. devoted to the classics, sits on 110 wooded acres. Schuler Shook provided Theatre Planning and Architectural Lighting design services for the Touchstone Theatre in 2009 and the Hill Theatre in 2019.

Hill Theatre's updates include improved theatrical lighting and technical positions, stage traps, box booms, a primary catwalk and a theatrical lighting system. A new post and beam trapped stage allows for greater flexibility and multiple configurations. Power and control infrastructure was added to the new trap room below the stage. The theatrical lighting and control system was upgraded with expanded power capacity and includes a new, custom designed cue light system.

Architectural lighting upgrades incorporated house and accent lighting for the audience seating, outdoor front of house areas, stage area work lighting, and back of house performer and production support areas.

---

### SCOPE OF WORK:

Theatre consulting, planning and equipment design.  
Architectural lighting design for public areas.



# SCHULER SHOOK PROJECT EXAMPLE

---

## CENTRAL PARK BANDSHELL RED WING, MN

2009

---

This Red Wing bandshell had its opening celebration and first performance on July 4, 2009. Schuler Shook provided the theatre planning services and design of the lighting and rigging systems.

This new state-of-the-art band shell replaces the existing band shell in Red Wing's historic Central Park. The City's hope is to transform this underutilized park into Red Wing's "community living room." The additional size of the stage and high-tech lighting, rigging and audio systems will allow the city to host larger orchestras, rock and country bands, and theatrical performance troupes.

Light fixtures and a simple lighting control system were designed to meet the performance needs of local troupes. Infrastructure, including additional power, truss rigging points, and cable sleeves have been designed to meet the needs of large touring groups.

---

### SCOPE OF WORK:

Theatre planning and architectural lighting design for a new bandshell in an historic park.



# URBAN ECOSYSTEMS PROJECT EXAMPLE

---

## CAMP TEKO

Temple Israel Minneapolis  
Lake Minnetonka, Orono, MN

---

Phase 1 construction complete Fall 2023

---

Located on the shores of Lake Minnetonka, Camp Teko is a long-established Jewish day camp that sparks lifelong friendships, environmental learning, a place for Jewish identity to thrive for children ages 5-18. The site, formerly a Boy Scout camp until 1972, is an 18-acre gem of rolling hills, woodlands, wetlands, and shoreline.

However, given decades of use, the camp was in need of updating. Recognizing an opportunity to modernize the camp experience, Temple Israel and the City of Orono conducted a capital campaign to create new buildings and outdoor spaces and bring green technology to the campus. In 2020, a renovation process began to expand programming and develop new facilities. Project master planning included the identification of new outdoor program spaces and 25,000 SF of new buildings. Site programming included outdoor classrooms, native plant community restoration, ADA accessibility for all pedestrian trails, and innovative rainwater management strategies. This project demonstrates our ability to plan a complex project involving numerous stakeholders and a difficult permitting environment.



---

## COLLABORATORS:

Locus Architects  
Civil Site Group

# URBAN ECOSYSTEMS PROJECT EXAMPLE

## HIGHLAND MEMORIAL

St. Phillips Church in the Highlands  
Garrison, NY

Work Completed 2016

The St. Philip's Churchyard is a spiritual space in great harmony with its natural setting amidst trees and stones. This bucolic cemetery features an eclectic mix of monumental and unique gravestones.

To serve the community and meet modern burial needs, the church vestry chose to expand the memorial space with a columbarium. The design concept aims to create an emotional focal point for remembrance. Analysis of the church grounds revealed an intimate, secluded hollow on the edge of a wood. This peaceful space offers clear views of the church and graveyard.

The spatial focal point is a new 40-foot-long columbarium wall containing 96 burial niches for cremated remains. The wall incorporates historic capstones from a former church boundary and blends with the character of other stone walls in the churchyard. Earthworks were gently adjusted to create an earthen berm that encircles the space, along with artfully placed boulders that serve as headstones for in-ground burial plots.

At the center of the space, three large boulders function as seating elements while flagstones contain additional in-ground burial plots. The columbarium space includes a prayer, engraved in stone, dedicated to the ministry and memory of Reverend Francis Geer of St. Philip's Church.



# URBAN ECOSYSTEMS PROJECT EXAMPLE

## ST JAMES THE LESS - MASTER PLAN

St. James the Less  
Scarsdale, NY

Work Completed 2021

This project involved creating a master plan for the historic church, campus, and cemetery in Scarsdale, NY.

The plan involved the creative redesign of the parking, as well as the creation of a dedicated arrival court, liche gate, and meditation labyrinth.

The plan also addressed signage redesign and traffic safety considerations in the context of a sensitive historic site that includes unmarked burials from the era of the Underground Railroad.



# CORE 4 ENGINEERING, INC. EXAMPLES



## Poplar Hall, Appleton, WI

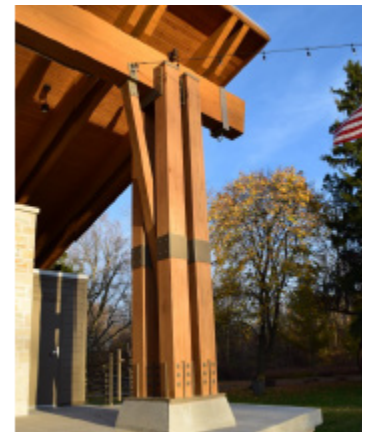
2022 Completion

8,000 SF

**Woodwards U.S. Wood Design Regional Excellence Award**



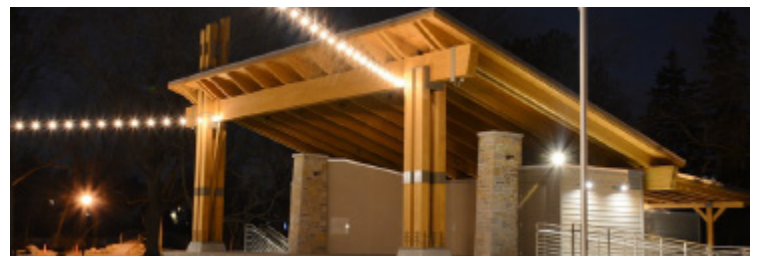
This over 8,000 square foot project created a multi-use venue for a variety of events from weddings to concerts! The two story design features sloped roof cantilevers, floor to ceiling windows along the back that offer a beautiful view of the Fox River, and cross-laminated timber (CLT) floor panels to create a wrap-around mezzanine within the main space. The project also includes a stage, two bar areas, storage space, prep room, and coat room located near the entryway.



## Cedar Creek Park, Cedarburg, WI

2016 Completion

2,500 SF



The Cedar Creek Park Band Shell re-replaces an existing 50-year old band shell in an effort to improve Cedar Creek Park. The new stage features a cantilevered slab that is supported in part by the existing band shell foundations as well as the new multi-glulam column moment frame featured at the front of the stage. The exposed glulam roof joist and beam structure combines architectural aesthetics with structural purpose.

# CORE 4 ENGINEERING, INC. EXAMPLES



9/11 Memorial  
Kewaskum, WI

2021 Completion



Featuring a beam of steel recovered from the North Tower of the World Trade Center as its center piece, this beautiful memorial honors those that were lost on 9/11/2001 – including Kewaskum Graduate, Andrea Lyn Haberman – as well as those who were a part of the operations that took place after the events of 9/11 at Ground Zero.



Mequon-Thiensville Gateway  
Mequon, WI

2020 Completion  
3,700 SF



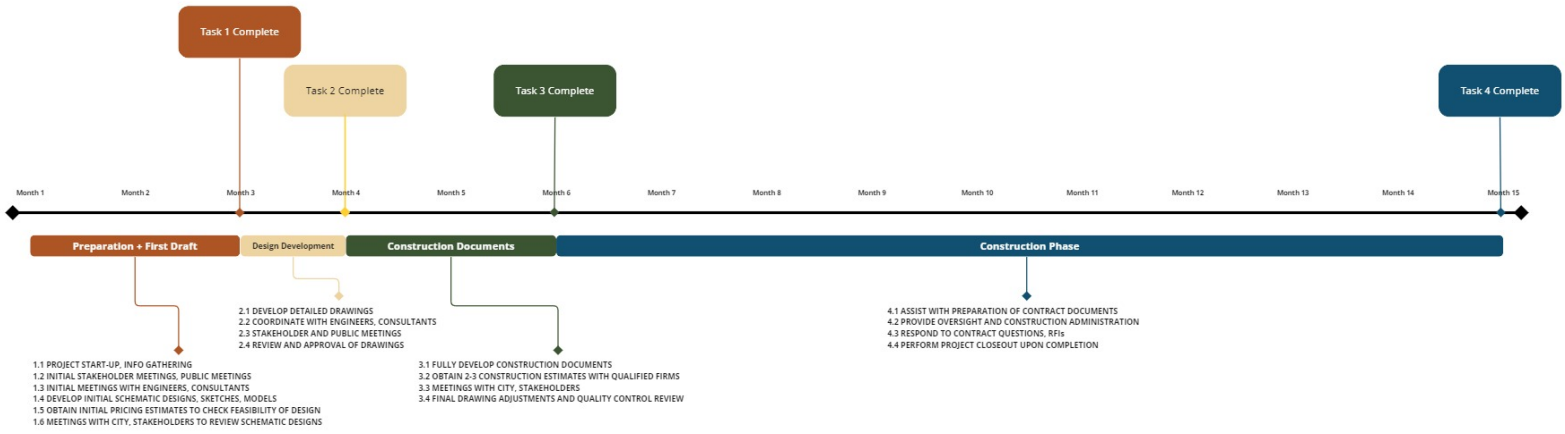
The Mequon-Thiensville Gateway offers a beautiful riverfront community space between the Towns of Mequon and Thiensville. This project acts as an entry point to the neighborhood at the center of both communities—the Mequon-Thiensville Town Center District.

# FEE

	AWH - AH Lead Architect	AWH - NA Lead Designer	AWH - NS Proj. Designer	AWH - LB Proj. Mgr
HOURLY RATES	250	195	135	175
<b>TASK 1: PREPARATION AND FIRST DRAFT (2 Months)</b>				
1.1 PROJECT START-UP, INFO GATHERING	4	8	8	4
1.2 INITIAL STAKEHOLDER MEETINGS, PUBLIC MEETINGS	8	8	2	2
1.3 INITIAL MEETINGS WITH ENGINEERS, CONSULTANTS	0	6	6	2
1.4 DEVELOP INITIAL SCHEMATIC DESIGNS, SKETCHES, MODELS	6	24	10	2
1.5 OBTAIN INITIAL PRICING ESTIMATES TO CHECK FEASIBILITY OF DESIGN	2	4	0	2
1.6 MEETINGS WITH CITY, STAKEHOLDERS TO REVIEW SCHEMATIC DESIGNS	4	4	4	0
SUB-TOTAL HOURS	24	54	30	12
SUB-TOTAL FEE	\$ 6,000.00	\$ 10,530.00	\$ 4,050.00	\$ 2,100.00
TOTAL FEE FOR TASK 1	\$ 22,680.00			
<b>TASK 2: DESIGN DEVELOPMENT (1 month)</b>				
2.1 DEVELOP DETAILED DRAWINGS	2	36	32	0
2.2 COORDINATE WITH ENGINEERS, CONSULTANTS	0	12	4	2
2.3 STAKEHOLDER AND PUBLIC MEETINGS	8	8	2	2
2.4 REVIEW AND APPROVAL OF DRAWINGS	2	2	0	0
SUB-TOTAL HOURS	12	58	38	4
SUB-TOTAL FEE	\$ 3,000.00	\$ 11,310.00	\$ 5,130.00	\$ 700.00
TOTAL FEE FOR TASK 2	\$ 20,140.00			
<b>TASK 3: CONSTRUCTION DOCUMENTS (2 months)</b>				
3.1 FULLY DEVELOP CONSTRUCTION DOCUMENTS	4	28	24	0
3.2 OBTAIN 2-3 CONSTRUCTION ESTIMATES WITH QUALIFIED FIRMS	0	8	0	4
3.3 MEETINGS WITH CITY, STAKEHOLDERS	8	8	2	2
3.4 FINAL DRAWING ADJUSTMENTS AND QUALITY CONTROL REVIEW	8	8	4	0
SUB-TOTAL HOURS	20	52	30	6
SUB-TOTAL FEE	\$ 5,000.00	\$ 10,140.00	\$ 4,050.00	\$ 1,050.00
TOTAL FEE FOR TASK 3	\$ 20,240.00			
<b>TASK 4: CONSTRUCTION PHASE (9 Months)</b>				
4.1 ASSIST WITH PREPARATION OF CONTRACT DOCUMENTS	0	4	0	4
4.2 PROVIDE OVERSIGHT AND CONSTRUCTION ADMINISTRATION	2	36	0	2
4.3 RESPOND TO CONTRACT QUESTIONS, RFIs	0	24	4	0
4.4 PERFORM PROJECT CLOSEOUT UPON COMPLETION	2	4	0	2
SUB-TOTAL HOURS	4	68	4	8
SUB-TOTAL FEE	\$ 1,000.00	\$ 13,260.00	\$ 540.00	\$ 1,400.00
TOTAL FEE FOR TASK 4	\$ 16,200.00			
AWH AND CONSULTANTS TRAVEL AND REIMBURSABLE EXPENSES NOT TO EXCEED	\$ 2,500.00			
<b>TOTAL AWH ARCHITECTS HOURLY FEE</b>	<b>\$ 81,760.00</b>			
<b>CORE4 STRUCTURAL ENGINEER</b>	<b>\$ 6,500.00</b>			
<b>SCHULER SHOOK THEATER CONSULTANT</b>	<b>\$ 4,000.00</b>			
<b>URBAN ECOSYSTEMS LANDSCAPE ARCHITECT</b>	<b>\$ 7,500.00</b>			
<b>TOTAL TEAM FEES</b>	<b>\$ 99,760.00</b>			

We propose to complete the project for a lump sum total of \$99,760.00 (ninety nine thousand seven hundred sixty dollars) not including reimbursables as outlined above

# PROJECT TIMELINE



---

THANK YOU FOR YOUR CONSIDERATION

---