

EDA Competitive Tourism Grants
Funding Opportunity Number: EDA-2021-ARPATOURISM

A. Applicant Information

- A.1 EDA Application Identifier:
- A.2. Lead Applicant: City of Marquette
- SAM CAGE code: 0CMH2
- SAM Registration Expiration Date: March 28, 2022
- Fiscal Year End date: September 30

B. Project Information

B.1. Provide a geographical definition of the region to be served by the investment (project), including the specific geographic location of the project within the region.

The City of Marquette, Michigan (46.5436° N, 87.3954° W) is the largest city in the 15-county region of Michigan's Upper Peninsula (U.P.) and is the location of the proposed EDA Tourism project. Specifically, the geographic location of the proposed Lake Superior Cultural Arts Trail will be along the existing, city-owned, 8-mile, ADA approved, multi-use trail on the Lake Superior shoreline (see project map). The predominantly rural U.P. (with 10 of the 15 U.P. counties designated by the EDA as rural) comprises 30% of the state's landmass yet holds only 3% of its population. The City of Marquette (population 22,822) is within Marquette County, a statistically micropolitan area that consists of two designated opportunity zones. The U.P. boasts vast, pristine natural space and rugged wilderness that provide a year-round playground for outdoor enthusiasts, supports a nature tourism economy, and provides a competitive advantage in the growing global outdoor recreation economy. The City of Marquette is a Lake Superior coastal community and an active Great Lakes shipping port that is crucial to the iron ore industry. Marquette has been impacted by the recent closure of two coal-powered electric plants (one municipal and one primarily for local iron mines). The Marquette Lake Superior shoreline has sustained millions in damage in recent years (road closure, infrastructure damage, erosion, etc.) due to high lake levels and more severe storms attributed to climate change.

B.2. Describe and outline the scope of work for the proposed EDA investment, including a list of tasks to be undertaken. -construction assistance should include a statement of project components; indicate if the proposed project involved the construction of a new facility or the enlargement, expansion, renovation, or replacement of an existing facility or facilities. Describe the existing facility and proposed project components in terms of dimensions, capacities, quantities.

As the regional economic hub with hotels, restaurants and shops, Marquette is often used by tourists as a "base camp" to sleep while taking day-trips to visit other attractions in the area such as Pictured Rocks National Park to the east and Craig Lake State Park to the west. This proposed EDA project will transform the city-owned Great Lakes shoreline into a tourism destination by; 1) creating the new Lake Superior Cultural Arts Trail along 8 miles of existing, ADA-accessible waterfront hiking trail and 2) improving public access to outdoor recreation opportunities and Lake Superior with nature-based green infrastructure to stabilize and restore prioritized coastal erosion sites and degraded areas immediately adjacent to the proposed Cultural Arts Trail. This innovative EDA project is designed to increase sustainable economic development through increased tourism and longer local stays due to the Lake Superior Cultural Arts Trail! Project partners include but are not limited to; Marquette Community Development, Marquette Arts and

Culture, Marquette Economic SmartZone, Keweenaw Bay Indian Community and the Superior Watershed Partnership.

Specific tasks to be undertaken include but are not limited to:

The Lake Superior Cultural Arts Trail will include five (5) free-standing sculptures, ten (10) interpretive signs and one (1) central gathering space/communal fire. Signs will be dual-language including English and the local Native American/Anishinaabe language. All art/signs will be located along the existing 8 mile, ADA approved, multi-use trail on the Lake Superior shoreline. Artwork will be created by regional Native American artists and local artists with support provided by the Marquette Office of Arts and Culture and the Public Arts Commission. This unique project promotes sustainable nature-based tourism by installing a series of public art pieces and interpretive signs that honor the rich cultural, land-based history of this rural community featuring the traditional Native American culture (Ojibwe/Anishinaabe) and more recent immigrant cultures (Cornish, Finnish, Italian, Swedish, etc.) that contributed to the regional legacy of mining, forestry, agriculture and outdoor recreation. In addition to building rural capacity through nature tourism this project will engage all ages of the public, encourage a healthy lifestyle (all-season activities include walking, biking, skiing, etc.) and foster sustainable economic development through increased tourism and related local business activity.

Work will be completed by the Superior Watershed Partnership's (project partner) Great Lakes Climate Corps (GLCC). The project will utilize nature-based green infrastructure to improve public access to the Lake Superior shoreline and stabilize and restore prioritized coastal erosion sites and degraded areas immediately adjacent to the proposed 8-mile Cultural Arts Trail. Marquette's Lake Superior shoreline sustained millions of dollars in damage in recent years (road closure, infrastructure damage, erosion, etc.) due to high lake levels and more severe storms attributed to climate change. Coastal resiliency and green infrastructure work will be completed by licensed contractors (TBD), City of Marquette Public Works Department and the Superior Watershed Partnership's GLCC field crews. Restoration and green infrastructure work will include but is not limited to; coastal bio-engineering to control erosion, bio-swailes, dune restoration, native tree and shrub plantings and invasive species removal. In addition, the Keweenaw Bay Indian Community (KBIC; project partner) has provided a list of traditional native plant species that will be re-introduced at prioritized sites along the 8-mile cultural trail site. The Area of Potential Effect (APE) for the proposed project includes paved and vegetated upland areas adjacent to the Lake Superior shoreline with the City limit and includes a 300-400' buffer along the existing 8-mile long paved multi-use/ADA-compliant trail. Proposed locations for shoreline restoration/stabilization work includes 3,836 linear feet (South), 2,492 linear feet (Middle), and 4,451 (North) (see attached topographic map and photos).

B.3. Economic development needs:

B.3.a. Does the region in which the project will be located have a Comprehensive Economic Development Strategy (CEDS)?

-Yes: what is the source?

Central Upper Peninsula Planning and Development Regional Commission: [2021-2025 CEDS](#).

See section B.3.b for alignment.

B.3.b. Describe the economic conditions of your region. Define the economic development need to be addressed by the proposed EDA investment and explain how the proposed investment will address that need:

Marquette's economy has been adversely affected by the damage to the travel, tourism, and outdoor recreation sectors due to the COVID-19 pandemic, climate change impacts and the recent closure of two

coal-fired generating plants (one municipal/one industrial). Marquette's unemployment rate is 5.4%; the national unemployment rate, as of November 2021, was 3.9%. According to U.S. Census Bureau data, Marquette has an in-person poverty rate of 25%, more than double the national rate of 11.4%. Marquette County's unemployment rate increased by 3.5% from 2019 to 2020, a consequence of the economic conditions mentioned above. Closure of the coal-powered plants along with the pandemic impacted job availability and retention, caused the loss of many well-paying jobs. Based on the Bureau of Labor Statistics Local Area Another upcoming economic dislocation includes the closure of Eagle Mine (projected for 2025), leaving over 350 people without viable employment. The Central Upper Peninsula Planning and Development (CUPPAD) regional commission identifies these economic dislocations as the "Triple Threat" to Marquette County's economy, stating "the combined closures of the Empire Mine, the Presque Isle Power Plant, and the future closing of the Eagle Mine will cause major economic disruptions for the entire region. In our small community, these economic losses have already caused significant strain on families, local governments, and businesses" ([Triple Threat Economic Resiliency Strategy, 2020](#)).

Although these economic dislocations indicate hardship, Marquette is well-positioned for attracting and sustaining long-term economic growth, especially in the travel, tourism and outdoor recreation sectors, as identified by CUPPAD, the area is an economic base of tourism, centered around the local sights and outdoor recreation. The Center on Rural Innovation (CORI) noted a higher than average rate of worker productivity. Other data from CUPPAD's CEDS notes Marquette County alone makes up almost 60% of the entire Upper Peninsula's GDP. Marquette is also a U.S. Department of Treasury-designated Opportunity Zone. The proposed EDA investment in the Lake Superior Cultural Arts Trail will enhance the tourism, recreation, and travel industry in the U.P., through environmentally sustainable development, benefiting over 275 tourism-related businesses that employ close to 3,000 community members. Marquette's location on the south shore of Lake Superior, includes Presque Isle Harbor and the LSI Ore Dock, which is one of the busiest Great Lakes shipping ports in both the US and Canada. The Port is almost entirely used for iron ore shipping that supports the economy of Great Lakes mining and U.S. steel manufacturing industries with an annual capacity of 9.5 million tons, generating over \$6 billion per year.

The proposed project aligns with the primary goals of the region's CEDS, including: objective 1.3, work regionally to develop a plan for sustainable tourism which ensures the long-term preservation of our natural resources; objective 1.4, create a tourism environment that is inviting to people of all ages and abilities by enhancing the accessibility; objective 1.2, job training and leadership development opportunities to help retain youth; objective 1.2 (VC), encourage the design of vibrant, walkable, and healthy central U.P. communities by working with them to integrate Smart Growth Tenets as principles in their own plans and help plan and acquire funding for regional non-motorized trail initiatives; objective 3.1 prioritize placemaking and public art installations in communities; and objective 3.2, highlight local culture and heritage through methods like interpretive signage, walking tours of communities, and supporting places in which to learn about local history.

B.4. Applicant's capability. Briefly describe the applicant's capability to administer, implement, and maintain the project.

The project will be managed and completed by the City of Marquette in cooperation project partners and licensed contractors. The City of Marquette is the sole owner of the shoreline property where all EDA-funded projects will be implemented and has the authority to carry out and maintain the project.

The city administers numerous local, state and federal grants including state-funded block grants for housing and public works projects each year and has been recognized with a Certificate of Achievement for Excellence in Financial Reporting by the Government Finance Officers Association.

The project team includes the following City staff/departments: Karen Kovacs, City Manager; Mary Schlict, Finance Director; Dennis Stachewicz, Director of Community Development; Mikael Kipela, City Engineer; Scott Cambensy, Director of Public Works; and Mark O’Neill, Director of Municipal Utilities. The Marquette City Department of Engineering will be the lead on project design and will coordinate closely with other departments. The department is composed of nine individuals (three civil engineers, one surveyor, three technicians/inspectors, one GIS technician, and one office staff person) and completes utility and street reconstruction and rehabilitation projects throughout the city each year.

Reconstruction projects include/have included initial topographic survey, design, contract document creation, bidding, construction management and inspection. In 2020, the City of Marquette completed relocation of Lakeshore Boulevard in the project location with federal and non-federal funding valued at \$3,000,000. Rehabilitation projects include/have included: slip lining sewers, water and sewer service line replacement, sidewalk replacement, milling and overlaying street pavement, and pavement crack sealing. Both reconstruction and rehabilitation projects involve administering contracts with contractors. Over the past twenty years the cost of the above mentioned projects has averaged five million dollars per year.

In addition, the Superior Watershed Partnership (SWP) will provide technical assistance for project coastal stabilization and restoration components. Since 2000, GLCC crews have worked to implement high priority hands-on climate-related conservation and restoration projects within three Great Lakes watersheds (Lakes Huron, Michigan, and Superior). GLCC crews are experienced in a wide range of conservation and community projects including, but not limited to, stream restoration, erosion/sediment control, native pollinator habitat restoration, wildlife habitat restoration (forest openings, tree planting, etc.), environmental monitoring, trail building and public access improvements. The GLCC program recently received recognition through the Michigan Heroes Project, a program of the Governor’s Michigan Community Service Commission, for contributions to the community during the pandemic. Specifically, the GLCC mobilized to staff food distribution events and deliver food and basic necessities to those with mobility impairments, the elderly, and others at increased risk for severe complications from Covid-19. GLCC Corps members later transitioned to partnering with tribal, federal, state, and local partners including Pictured Rocks National Lakeshore, Hiawatha National Forest, and Marquette County to reopen outdoor recreational access that had previously closed due to the pandemic and faced challenges reopening with limited staff. The City of Marquette’s Department of Engineering will provide technical oversight for related shoreline infrastructure protection components.

B.5. List and describe the strategic partners and organizations to be engaged in this project.

Project partners include but are not limited to;

City of Marquette, Community Development Office (Lead Project Applicant): This EDA Tourism project will be managed and completed by the City of Marquette, in cooperation with project partners and licensed contractors. The City of Marquette is the sole owner of the shoreline property where all EDA-funded projects will be implemented and has the authority to carry out and maintain the project. The Marquette Office of Arts and Culture serves as the lead local arts agency, overseeing the coordination for implementation and planning of The Lake Superior Cultural Arts Trail.

Marquette Economic SmartZone: The Innovate Marquette Economic SmartZone creates a supportive environment and robust entrepreneurial ecosystem in which entrepreneurs in all sectors can be recognized

and promoted and where new business ideas can start, grow, and succeed while existing ones can continue to innovate, thrive, and expand. The SmartZone promotes sustainable economic development.

Keweenaw Bay Indian Community (KBIC): The Keweenaw Bay Indian Community of the Lake Superior Band of Chippewa Indians is one of the four original member tribes in Michigan that founded the Inter-Tribal Council of Michigan. Their service area includes their L'Anse Reservation – the oldest and largest in Michigan – as well as members in Marquette, Ontonagon, Gogebic, Houghton and Keweenaw Counties. KBIC will advise research and offer resources for the Lake Superior Cultural Trail signs, as well as assist in identifying Anishinaabe artists for trail design.

Superior Watershed Partnership (SWP): SWP is a non-profit dedicated to the protection and restoration of the Great Lakes. The SWP promotes effective, community-based solutions to address emerging Great Lakes issues, climate change, sustainability, habitat restoration, and pollution prevention. Based in Marquette, the SWP serves three Great Lakes (Superior, Michigan, Huron) over 25 communities, 15 counties and 5 Native American tribes. SWP's Great Lakes Climate Corps (GLCC) crews will implement coastal restoration through green infrastructure

Other supporters of the Lake Superior Cultural Arts Trail include: Northern Michigan University's Center for Native American Studies; Marquette Maritime Museum; Travel Marquette; Superior Alliance for Independent Living; Marquette-Alger Regional Education Agency; Climate Adaptation Task Force (CATF); and Peter White Public Library.

B.6. Describe the investment (project) impact and fit with EDA funding priorities

Marquette's economy has been adversely affected by the damage to the travel, tourism, and outdoor recreation sectors due to the COVID-19 pandemic, climate change impacts and the recent closure of two coal-fired generating plants (one municipal/one industrial). The City of Marquette's unemployment rate increased by 3.4% from 2019 to 2020 (current unemployment rate: 5.4%; national unemployment rate: 3.9%).

The proposed Lake Superior Cultural Arts Trail follows EDA's effective rebuilding strategy by providing opportunities for sustainable, long-term economic development, leveraging local and private funds (City of Marquette match; Native American Heritage Foundation) to create, expand and retain the travel, tourism and outdoor recreation industry in the City of Marquette. Funding secured through the Native American Heritage Foundation directly supports the proposed project by providing the design plan for the Lake Superior Cultural Arts Trail; so the project is shovel-ready.

The Bureau of Economic Analysis identifies value-added contributions of outdoor recreation from art, entertainment, retail trade, accommodation-food service, manufacturing, transportation, and wholesale trade. Because outdoor recreation fuels employment in multiple sectors, promoting business development in this industry cluster holds tremendous opportunity to create and upgrade to high-wage jobs. The Lake Superior Cultural Arts Trail aligns with EDA investment priorities 2) Recovery and Resilience and 6) Environmentally Sustainable Development through the enhancement of an 8-mile, city-owned, ADA accessible, multi-use path with 5 free-standing sculptures, 10 interpretive signs, 1 central gathering space/communal fire and nature-based infrastructure. The project will utilize nature-based green infrastructure to improve public access to the Lake Superior shoreline and stabilize and restore prioritized coastal erosion sites and degraded areas immediately adjacent to the proposed 8-mile Cultural Arts Trail. Marquette's Lake Superior shoreline sustained millions of dollars in damage in recent years (road closure, infrastructure damage, erosion, etc.) due to high lake levels and more severe storms attributed to climate change. Coastal resiliency and green infrastructure work will be completed by licensed contractors (TBD),

City of Marquette Public Works Department and the Superior Watershed Partnership's (project partner) Great Lakes Climate Corps (GLCC) field crews. Restoration and green infrastructure work will include but is not limited to; coastal bio-engineering to control erosion, bio-swales, dune restoration, native tree and shrub plantings and invasive species removal. In addition, the Keweenaw Bay Indian Community (KBIC; project partner) has provided a list of traditional native plant species that will be re-introduced at prioritized sites along the 8 mile cultural trail site. Nature-based infrastructure adds to Marquette's resiliency in handling anticipated climate stressors and reduces potential risks from future climate events.

B.7. Identify the proposed time schedule for the project

April 2022- March 2024

B.8. Economic Impacts of the project

B.8.a. Please describe the economic impacts of the project:

The City of Marquette's proposed EDA Lake Superior Cultural Arts Trail and related green infrastructure/coastal resiliency projects will create new jobs, retain existing jobs and spur new private investment. The following sources provided related local jobs/investment statistics and projections; Michigan Economic Development Corporation (MEDC), Innovate Marquette Economic SmartZone, Central Upper Peninsula Planning and Development Regional Commission (CUPPAD), Lake Superior Community Partnership Economic Development and Headwaters Economics. Anticipated jobs creation/retention due to the proposed EDA Lake Superior Cultural Arts Trail and green infrastructure/coastal resiliency work includes:

1. An estimated 15-25 new temporary construction and temporary arts creation/installation jobs.
2. An estimated 15-50 new permanent jobs in the local tourism industry (lodging, restaurants, retail, etc.).
3. An estimated 275-600 retained jobs in the local tourism industry (lodging, restaurants, retail, etc.).
4. An estimated 5-15 new private investment/entrepreneur ventures (with an estimated \$10 million of private investment) related to this proposed EDA project
5. Resiliency: Improved community and climate resiliency/flood prevention for the EDA trail and adjacent major transportation route (Lakeshore Boulevard) that provides:
 - Reliable access to an industrial port through which ~16% of the nation's iron ore production passes each year.
 - Reliable access to Presque Isle Park for more than 330,000 visitors annually.
6. Public Open Space - Creating more than 20 acres of public green space and waterfront amenities in an area that has had limited public access for decades.

In addition to creating the Lake Superior Cultural Arts Trail this EDA project will create many naturalized features incorporating green infrastructure to enable public access to Lake Superior providing critically important recreation opportunities for its users. During the COVID-19 pandemic, more Americans are spending time outside because of the mental and physical benefits that fresh air and nature provide, as well as a safer alternative to indoor gatherings. This project, once completed, can serve as a model for sustainable nature tourism and Great Lakes coastal resiliency and can be used as a model for other Great Lakes coastal

communities with comparable economic challenges and similar shoreline stability issues. By sharing this project, communities around the Great Lakes will be afforded efficiencies in designing similar nature tourism and resiliency projects. NOTE: The Lake Superior Cultural Arts Trail and related green infrastructure/coastal resiliency projects are designed to benefit the greater Marquette tourism industry (lodging, restaurants, retail, etc.) estimated at over 275 regional businesses (ie; no specific beneficiaries or businesses are identified).

B.8.b. Please identify the total estimated jobs and private investment that is expected to be generated by this project:

- Estimated jobs created: 50
- Estimated jobs retained: 600
- Estimated private investment: \$10 million

B.8.c. Please identify the sources of estimates above:

- letters from beneficiaries of the project
- Input/output model
- comparison to similar projects
- other method (specify):

B.9. Beneficiaries of the project - not applicable

B.10. Non-EDA funding for the project

B.10.a. Are all non-EDA funds committed to the project, available as needed, and not conditioned or encumbered in any way that would preclude their use consistent with the purpose of the project?

-yes

B.10.b. Identify the source, nature and amount of all non-EDA funds.

- source: City of Marquette; Native American Heritage Foundation; SWP
- amount: \$178,000; \$57,000
- date available: April 2022
- type: cash; cash
- restriction/comments: construction; planning/design

B.10.c. Does the applicant plan to seek other federal financial assistance as part of or in connection with this project? If so, please describe the source, amount and any terms and conditions of the funding, and when the funding will be available for use by the applicant.

-No

B.10. d. Please attach documentation confirming non-EDA (matching or cost share) funding:

(match letter)

B.11. Justification for sole source procurement

- will you contract work to complete part or all of this project?
- If yes, will contracts be awarded by competitive bid?

- Yes
- No; if now, provide justification

B.12 Equipment -Will any funds be used to purchase equipment?

-no

C. Regional Eligibility

C.1. Region Define the area/region that is the basis for the applicant's claim of eligibility. EDA will review and evaluate documentation submitted by the applicant to verify and determine eligibility

The City of Marquette's eligibility for the EDA Competitive Tourism grant program is being a municipal government. Also, based on the EDA's determination that economic injury from the coronavirus pandemic constitutes a "Special Need," consistent with the March 13, 2020 emergency declaration for all states, tribes, territories, local governments, and the District of Colombia.

C.2. Economic Distress

Check all the apply in establishing regional eligibility

C.2.A. Unemployment rate

C.2.B. Per capita income

C.2.C. Special need, including:

- Substantial out-migration or population loss;
- Underemployment; that is, employment of workers at less than full-time or at less skilled tasks than their training or abilities permit;
- Military base closure or realignment, defense contractor reductions-in-force, or U.S. Department of Energy defense-related funding reductions;
- Natural or other major disasters or emergencies;
- Extraordinary depletion of natural resources;
- Closing or restructuring of an industrial firm or loss of other major employer;
- Negative effects of changing trade patterns; or
- Other circumstances set forth in the applicable NOFO (please explain below).**

Based on the EDA's determination that economic injury from the coronavirus pandemic constitutes a "Special Need," consistent with the March 13, 2020 emergency declaration for all states, tribes, territories, local governments, and the District of Colombia.

C. 3. Substantial Direct Benefit If the project does not meet any of the criteria above, is it located in an Economic Development District (EDD), and will it provide substantial direct benefit to residents of an area within that EDD that does meet the distress criteria?

-not applicable

C.4. Source of data provided for regional eligibility determination

Check the box denoting what data source you used to establish eligibility:

C.4.c. The most recent other federal data for the region in which the project is located (e.g., U.S.Census Bureau or the Bureaus of Economic Analysis, Labor Statistics, Indian Affairs, etc.).

Please attach a copy of the documentation used to support your claim of eligibility:

-CENSUS DATA

D. Budget and Staffing: To be completed by applicants for non-construction assistance only

- D.1. Budget justification
- D.2. Indirect costs
- D.3. Key applicant staff

E. Administrative Requirements

E.1. Civil rights

E.1.a. Does the applicant understand and agree to comply with all applicable civil rights requirements (see 13 C.F.R. § 302.20)?

-Yes

E.1. b. Do identified "Other Parties" (as listed in question B.9.), businesses that will create and/or save fifteen or more jobs as a result of the EDA project, understand and agree to comply with all applicable civil rights requirements under 13 C.F.R. § 302.20, including the requirement to provide signed assurances of compliance (ED-900B)?

-not applicable

E.2. Lobbying certifications Will you be able to comply with federal requirements regarding lobbying?

-yes

E.3. Compliance with Executive Order 12372, State Single Point of Contact (SPOC) Does the state in which the project will be located have a project review process that requires submission to a Single Point of Contact (SPOC)?

E.3.a. No. Go to Question E.4

E.4. Single Audit Act Requirement

E.4.a. Does the applicant understand and agree to the requirements of subpart F of 2 C.F.R. part 200 regarding federal audits?

-Yes

E.4.b. Is the applicant currently audited under the Single Audit Act?

E.4.b.ii. Yes, If yes:

E.4.b.ii.a. What is the date of the most recent audit?

-September 30, 2020

E.4.b.ii.b. Was this audit submitted to the Federal Audit Clearinghouse?

-Yes; submitted September 29, 2021

A. PROJECT DESCRIPTION

1. Beneficiaries

The proposed project includes environmentally-sustainable development that will enhance the tourism, recreation, and travel industry in the U.P., through environmentally sustainable development, expanding the approximately 275 tourism-related businesses that employ close to 3,000 community members. In addition, Marquette is located on the south shore of Lake Superior and includes Presque Isle Harbor and the LSI Ore Dock, which is one of the busiest Great Lakes shipping ports in both the US and Canada. The Port is almost entirely used for iron ore (taconite) shipping that supports the economy of Great Lakes mining and U.S. steel manufacturing industries with an annual capacity of 9.5 million tons, generating over \$6 billion per year.

Anticipated jobs creation/retention due to the proposed EDA Lake Superior Cultural Arts Trail and green infrastructure/coastal resiliency work includes:

1. An estimated 15-25 new temporary construction and temporary arts creation/installation jobs.
2. An estimated 15-50 new permanent jobs in the local tourism industry (lodging, restaurants, retail, etc.).
3. An estimated 275-600 retained jobs in the local tourism industry (lodging, restaurants, retail, etc.).
4. An estimated 5-15 new private investment/entrepreneur ventures (with an estimated \$10 million of private investment) related to this proposed EDA project
5. Resiliency: Improved community and climate resiliency/flood prevention for the EDA trail and adjacent major transportation route (Lakeshore Boulevard) that provides:
 - Reliable access to an industrial port through which ~16% of the nation's iron ore production passes each year.
 - Reliable access to Presque Isle Park for more than 330,000 visitors annually.
6. Public Open Space - Creating more than 20 acres of public green space and waterfront amenities in an area that has had limited public access for decades.

NOTE: The Lake Superior Cultural Arts Trail and related green infrastructure/coastal resiliency projects are designed to benefit the greater Marquette tourism industry (lodging, restaurants, retail, etc.) estimated at over 275 regional businesses (ie; no specific beneficiaries or businesses are identified).

2. Proposed Construction

The Lake Superior Cultural Trail will include five (5) free-standing sculptures/art installations, ten (10) interpretive signs and one (1) central gathering space/communal fire. Signs will be dual-language including English and the local Native American/Anishinaabe language. All art/signs will be installed along an existing eight mile, ADA approved, multi-use walking trail along the Lake Superior shoreline on City-owned property. Artwork will be created by regional Native American artists and local artists with support provided by the Office of Arts and Culture and the Public Arts Commission.

In addition, the project will utilize nature-based green infrastructure to improve public access to the Lake Superior shoreline and stabilize and restore prioritized coastal erosion sites and degraded areas immediately

adjacent to the proposed 8-mile Cultural Arts Trail. Marquette's Lake Superior shoreline sustained millions of dollars in damage in recent years (road closure, infrastructure damage, erosion, etc.) due to high lake levels and more severe storms attributed to climate change. Coastal resiliency and green infrastructure work will be completed by licensed contractors (TBD), City of Marquette Public Works Department and the Superior Watershed Partnership's (project partner) Great Lakes Climate Corps (GLCC) field crews. Restoration and green infrastructure work will include but is not limited to; coastal bio-engineering to control erosion, bio-swales, dune restoration, native tree and shrub plantings and invasive species removal. In addition, the Keweenaw Bay Indian Community (KBIC; project partner) has provided a list of traditional native plant species that will be re-introduced at prioritized sites along the 8 mile cultural trail site.

Groundbreaking activities include grading and site preparation in upland areas (above the ordinary high water mark of Lake Superior) for art/signs and green infrastructure installations. Due to a short construction season, all on-the-ground improvements would be completed during the 2022 and 2023 field seasons (May-October). See attached site/topographical map of the project area.

The Area of Potential Effect (APE) for the proposed project includes paved and vegetated upland areas adjacent to the Lake Superior shoreline with the City limit and includes a 300-400' buffer along the existing 8-mile long paved multi-use/ADA-compliant trail. Proposed locations for shoreline restoration/stabilization work includes 3,836 linear feet (South), 2,492 linear feet (Middle), and 4,451 (North) (see attached topographic map and photos).

3. Need and Purpose

The City of Marquette, Michigan (46.5436° N, 87.3954° W) is the largest city in the 15-county region of Michigan's Upper Peninsula (U.P.) and is the location of the proposed EDA Tourism project. The predominantly rural U.P. (with 10 of the 15 U.P. counties designated by the EDA as rural) comprises 30% of the state's landmass yet holds only 3% of its population. The City of Marquette (population 22,000) is within Marquette County, a statistically Micropolitan area that consists of two designated opportunity zones. The U.P. boasts vast, pristine natural space and rugged wilderness that provide a year-round playground for outdoor enthusiasts, supports a nature tourism economy, and provides a competitive advantage in the growing global outdoor recreation economy. The Bureau of Economic Analysis identifies value-added contributions of outdoor recreation from art, entertainment, retail trade, accommodation-food service, manufacturing, transportation, and wholesale trade. Because outdoor recreation fuels employment in multiple sectors, promoting business development in this industry cluster holds tremendous opportunity to create and upgrade to high-wage jobs.

As the regional economic hub with hotels, restaurants and shops Marquette is often used by tourists as a "base camp" to sleep while taking day-trips to visit other attractions in the area such as Pictured Rocks National Park to the east and Craig Lake State Park to the west.

This proposed EDA project will transform the city-owned Great Lakes shoreline into a tourism destination by; 1) creating the new Lake Superior Cultural Arts Trail along 8 miles of existing, ADA-accessible waterfront hiking trail and 2) improving public access with nature-based green infrastructure to stabilize and restore prioritized coastal erosion sites and degraded areas immediately adjacent to the proposed Cultural Arts Trail.

This project is designed to increase sustainable economic development through increased tourism and longer local stays due to the Lake Superior Cultural Arts Trail. This is especially important during the ongoing COVID-19 pandemic, as more Americans are spending time outside because of the mental and physical benefits that fresh air and nature provide, as well as a safer alternative to indoor gatherings. In addition to the public green space, ecology, and infrastructure benefits the project will generate an estimated 15-25 temporary jobs, 15-50 permanent jobs, ensure the uninterrupted operation of a vital national port, and act as a catalyst for new adjacent residential and commercial development.

4. Alternatives to the Proposed Project

Alternative actions that were considered include the following:

Alternative Action 1: No Action

Under the No Action alternative, public benefits of the Lake Superior Cultural Arts Trail would not be realized and place-making/story telling opportunities would be lost. The shoreline would remain impacted by shoreline erosion, loss of coastal habitat, encroachment of invasive species, and undesignated public access points. Economic benefits including jobs, and other of nature-based tourism will not be realized despite the opportunities provided by a growing global outdoor recreation economy.

Alternative Action 2: Proposed Action

The Proposed Action will result in improved placemaking and outdoor recreational activities in the City of Marquette. The project is well aligned with the primary goals for the region's CEDS, including develop a plan for sustainable tourism which ensures the long-term preservation of our natural resources. Environmentally-sustainable development through improved public access and nature-based green infrastructure will stabilize and restore prioritized coastal erosion sites and degraded areas immediately adjacent to the proposed Lake Superior Cultural Arts Trail making the shoreline more aestically appealing and resilient to climate change through the use of native plant species and Traditional Ecological Knowledge. Project activities will be completed in upland locations and would not impact wetlands, floodplains or other waterways.

B. HISTORIC/ARCHEOLOGICAL RESOURCES

The Area of Potential Effect (APE) includes paved and vegetated upland areas adjacent to the Lake Superior shoreline with the City limit and includes a 300-400' buffer along the existing 8-mile long paved multi-use/ADA-compliant trail (see attached topographic map). The project is located on undeveloped City-owned trail/park/beach property along the entire route. The project is designed to enhance/showcase the cultural/historical heritage of the region and no historical properties/cultural resources will be adversely affected.

C. AFFECTED ENVIRONMENT

1. Affected Area

The project area is located within the city limits and includes a multi-use trail that spans the Lake Superior shoreline intersecting public parks, green spaces and public beaches. The trail follows the path of historic rail lines and traverses upland areas along the shoreline with very little topographical relief. Vegetation in the project area ranges from mowed turf grass to natural beach ridges/dunes containing native plants/dune grasses, shrubs and trees. There are no lands protected under state or federal law that are located on or in

the vicinity of the proposed project and the project will not result in any direct or indirect impacts. The project area is entirely under city ownership and will not result in any further development.

2. Coastal Zones

The project is located within a Michigan Coastal Management Zone which includes the Lake Superior shoreline and 1,000' feet inland. The project area includes beach/dune areas however, there are no critical dunes or high risk erosion areas located within the project APE.

3. Wetlands

There are no mapped wetlands located within the project APE. Proposed activities will take place in upland areas and not result in any impacts to wetlands or other water/waterways. <https://www.fws.gov/wetlands/data/mapper.html> accessed January 31, 2022.

4. Floodplains

The City of Marquette participates in the National Flood Insurance Program. The proposed project site is located adjacent to a mapped 100-year floodplain which includes FEMA mapped flood zones A and AE (FIRM Map Numbers: 26103C0495D and 26103C0485D). The proposed project will not result in any changes to the flood plain that would directly or indirectly impact the base flood elevation of the 1% annual chance of flood.

5. Climate Change

The City of Marquette has sustained millions of dollars in damage in recent years due to climate change in the form of more severe storms, infrastructure damage, road closures, coastal erosion and flooding. According to the National Climate Assessment Marquette is also at risk for residents who are already vulnerable, including lower-income and other marginalized communities, have lower capacity to prepare for and cope with extreme weather and climate-related events and are expected to experience greater impacts. Tribal nations are especially vulnerable because of their reliance on threatened natural resources for their cultural, subsistence, and economic needs. Marquette has taken steps to address climate impacts by developing a climate adaptation plan, receiving FEMA funding to relocate the coastal roadway (Lakeshore Boulevard) that was impacted by storm erosion and furthering climate planning by partnering with the Superior Watershed Partnership (SWP) to develop the Great Lakes Shoreviewer risk tool which was included in the NOAA US Climate Resilience Toolkit. This proposed EDA project further mitigates potential climate impacts by reducing coastal erosion and restoring natural shorelines adjacent to the Lake Superior Cultural Arts Trail. The project will also complement the recent City of Marquette Climate Resolution carbon reduction goals by 2050 and the use Traditional Ecological Knowledge (TEK) from the Keweenaw Bay Indian Community and the use of renewable materials whenever possible.

6. Endangered Species

A review of potential threatened or endangered species or critical habitat was provided by The Nature Conservancy using the Michigan Natural Features Inventory National Heritage database. The table below lists the potential occurrences located within a one mile radius of the proposed project area.

Endangered or Threatened Species Observed within One Mile of the Project Area

Scientific Name	Common Name	Federal Rank	State Rank
<i>Falco peregrinus</i>	Peregrine falcon*		E
<i>Salix pellita</i>	Satiny willow		SC
<i>Drosera anglica</i>	English sundew		SC
<i>Carex atratiformis</i>	Sedge		T
<i>Rallus elegans</i>	King rail		E
<i>Myotis septentrionalis</i>	Northern long-eared bat	LT	SC
<i>Myotis lucifugus</i>	Little brown bat		SC
<i>Trisetum spicatum</i>	Downy oat-grass		SC
<i>Gymnocarpium robertianum</i>	Limestone oak fern*		T
<i>Pinguicula vulgaris</i>	Butterwort*		SC
<i>Corispermum americanum</i>	American bugseed*		SC
<i>Juncus stygius</i>	Moor rush		T
<i>Amerorchis rotundifolia</i>	Small round-leaved orchis		E
<i>Tanacetum huronense</i>	Lake Huron tansy		T

*observed within the past 10 years

Determination of no adverse impacts from TNC: The proposal area was checked against the Michigan Natural Features Inventory database. The project area falls into the element occurrence range of Small Round Leaved Orchis (*Amerorchis rotundifolia*), King Rail (*Rallus elegans*), Satiny Willow (*Salix pellita*), Lake Huron Tansy (*Tanacetum huronense*), Moor Rush (*Juncus stygius*), Northern Long Eared Bat (*Myotis septentrionalis*), and Little Brown Bat (*Myotis lucifugus*). All of these element occurrence observations are more than thirty years old. Within one mile of the project area, there are other occurrences of Peregrine Falcon (*Falco peregrinus*), English sundew (*Drosera anglica*), Sedge (*Carex atratiformis*), Downy oat-grass (*Trisetum spicatum*), Limestone Oak Fern (*Gymnocarpium robertianum*), Butterwort (*Pinguicula vulgaris*), and American bugseed (*Corispermum americanum*). Some of these have been seen within the past ten years. In accordance with TNC staff recommendations, the MNFI Rare Plants and Animals List will be utilized to survey the project area for these species; however, it is unlikely that they are still present in the project area.

Citation: *Natural Heritage Biotics Database. Consolidated by: Michigan Natural Features Inventory. Distributed by MNFI and accessed on December 10, 2019 by Emily Clegg at The Nature Conservancy.*

7. Land Use and Zoning

The project is located entirely within the City limits on City-owned property that is primarily zoned for conservation and recreation. In addition, the City has implemented a policy to prohibit future development on the lake side of Lakeshore Boulevard. There are no agriculture lands designated as “prime/unique agriculture lands” by the U.S. Department of Agriculture (USDA) under the Federal Farmlands Protection Act or a local equivalent located within the project area.

8. Solid Waste Management

N/A

9. Hazardous or Toxic Substances

N/A.

10. Water Resources

The project includes installations of sign/art and green infrastructure practices that will not result in any impacts to surface and underground water resources or changes in local surface water runoff patterns.

11. Water Supply and Distribution System

N/A.

12. Wastewater Collection and Treatment Facilities

N/A.

13. Environmental Justice (Executive Order 12898)

This unique project promotes sustainable nature-based tourism by installing a series of public art pieces and interpretive signs that honor the rich cultural, land-based history of this rural community including; Native American (Ojibwe/Anishinaabe) culture, mining legacy, forestry, agriculture and outdoor recreation. In addition to building rural capacity through nature tourism this project will engage all ages of the public, encourage a healthy lifestyle (walking, biking, skiing, etc.) and foster sustainable economic development through increased tourism and related local business activity.

Specific environmental justice outreach initiatives will target marginalized communities including the Keweenaw Bay Indian Community (Native Americans throughout the Upper Peninsula have a 20% in-poverty rate, exceeding the national average of 11.4%), low income families, and college students by providing critical green infrastructure and access to free, outdoor activities. As these groups make up a significant portion of the local community, targeted efforts will help to ensure well-rounded representation and input for long-term community planning. Marquette's unemployment rate is 5.4%; the national unemployment rate, as of November 2021, was 3.9%. According to U.S. Census Bureau data, Marquette has an in-person poverty rate of 25%, more than double the national rate of 11.4%. Marquette County's unemployment rate increased by 3.5% from 2019 to 2020. The Lake Superior Cultural Arts Trail addresses the disproportionate and adverse economic, human health, environmental, climate-related and other cumulative impacts affecting underserved communities by enhancing public access to outdoor recreation, increasing tourism-related business, and improving the resiliency of climate-stressors. Benefits of the proposed project serve to enhance the livelihoods and well-being of all community members.

14. Transportation (Streets, Traffic and Parking)

There will be no changes to land uses or traffic patterns or parking as a result of the proposed project.

15. Air Quality

N/A.

16. Noise

N/A.

17. Permits

The proposed project activities will not require any Federal, State, or local permits of an environmental nature. All work will be completed in upland locations on City-owned property.

18. Public Notification/Controversy

Since the adoption of the City's Arts and Culture Master Plan in 2014 (since updated), the Office of Arts and Culture has formally worked to develop a systems-based approach targeting economic, physical, and social change (current persons in poverty: 25%). Incorporated into this civic process of a systems change is the importance of individuals and groups within the arts/culture community working across sectors. In 2017, the City adopted a Public Art Policy, promoting cultural heritage and artistic development to enhance the City's character and identity, contribute to economic development and tourism, add warmth, dignity, beauty, and accessibility to public spaces, and expand the experience and participation of citizens with the arts. A recent Parks and Recreation Master Plan Citizen Survey indicated a majority of households supporting an interpretive cultural trail. The Lake Superior Cultural Trail embodies the escalating interest expressed by the public and municipality in using the arts to strengthen community; it is the intersection of art, science, history, and civics. Public support combined with a strong City Arts Policy make The Lake Superior Cultural Trail the right project, at the right time, in the right place.

19. Cumulative Effects

The proposed project will not result in any direct or indirect effects to natural resources, ecosystems and/or human communities as described above. The proposed project will improve public access and restore coastal erosion and degraded areas immediately adjacent to the proposed Cultural Arts Trail with nature-based green infrastructure. This work compliments previous actions undertaken to protect and restore the Lake Superior shoreline and natural resources in the City of Marquette including shoreline stabilization, invasive species removal, coastal habitat restoration, and public access improvements.

D. MITIGATION

The proposed project was designed to minimize impacts and restore environmental resources including coastal habitat along the Lake Superior shoreline. The project is not expected to result in any direct or indirect impacts to environmental resources. Invasive plant species control measures will be implemented as a part of the project to ensure habitat restoration objectives are met.

E. LIST OF ATTACHMENTS

The following checklist is a list of required and optional attachments to the Environmental Narrative as described in the sections above. The items listed in the optional section may be required by EDA at a later date to complete the project review and selection process, so it is recommended that you provide them now if they are currently available. While the documents listed below are the most frequently required for scoping determinations, EDA reserves the right to request additional items that are not listed below when necessary.

Applicants are not required to contact other governmental agencies for environmental or historical resources consultation until directed by EDA, though any interagency coordination letters that may be currently available should be provided. **EDA expects that all Applicants whose projects are selected for further evaluation will proceed with consultations in an expeditious manner. As such, Applicants should have the required information prepared for submission immediately upon notification of selection by EDA.** If you determine prior to application that your project may affect environmental or historical resources, you may contact the appropriate Regional Environmental Officer to determine if early interagency consultation is appropriate.

Please refer to the applicable Federal Funding Opportunity for unique requirements for each individual grant competition and a list of documents required for submittal with the application.

Checklist of Optional Environmental Documents that should be submitted with Application if available (will expedite review and selection process):

- SHPO/THPO and Tribal leader comments and copy of submittals (see Section B)
- Site photographs (see Section C1)
- Coastal Zone consistency determination (see C2)
- Wetland delineation and/or Jurisdictional Determination (see C3)
- Preliminary wetland info (see C3)
- U.S. Army Corps of Engineers comments, Section 404 Permit, Section 10 Permit, and/or Water Quality Certification (401 approval) (see C3)
- Biological Assessment and/or survey for federally protected species (see C5)
- Correspondence with US Fish and Wildlife Service and/or National Marine Fisheries Service (see C5)
- Natural Resources Conservation Service determination of Prime Farmland, Form AD-1006, if applicable (see C6)
- Phase I and II Environmental Site Assessment (see C8)
- Sole Source Aquifer review by US Environmental Protection Agency, if applicable (see C9)
- Other federal, state and local environmental permits (see C16)
- Copies of public notices, public hearing minutes, etc. (see C17)

Appendix A: Applicant Certification Clause

The applicant represents and certifies that it has used due diligence to determine that the description of the project site described herein is accurate with respect to the presence or absence of contamination from toxic and hazardous substances. The term “site” includes the entire scope of the project, including future phases of the project and all areas where construction will occur.

1. Is the site currently, or has it in the past 50 years, been used for any of the following operations or activities:
 - a. Generation of hazardous substances or waste?
 Yes No
 - b. Treatment, storage (temporary or permanent), or disposal of solid or hazardous substances or waste?
 Yes No
 - c. Storage of petroleum products?
 Yes No
 - d. Used/waste oil storage or reclamation units?
 Yes No
 - e. Research or testing laboratory?
 Yes No
 - f. Ordinance research, testing, production, use, or storage?
 Yes No
 - g. Chemical manufacturing or storage?
 Yes No
 - h. Weapons or ammunition training, use, or testing?
 Yes No
 - i. Iron works/foundry?
 Yes No
 - j. Railroad yard?
 Yes No
 - k. Industrial or manufacturing operation?
 Yes No

If any of the above operations ever occurred at the site, and if appropriate cleanup or other mitigation actions were performed in accordance with the local, State, and federal laws, please attach documentation of these actions.

2. Do wells draw from an underlying aquifer to provide the local domestic water supply?
 Yes No

Appendix A: Applicant Certification Clause

3. Has a federal, State, or local regulatory authority ever conducted an environmental assessment, environmental impact statement, or a preliminary assessment/site inspection, or similar environmental surveyor inspection report at the site? If yes, please list here and attach copies of these reports or results.

_____ Yes No

2)

3)

4)

5)

4. Have any environmental or OSHA citations or notices of violation been issued to a facility at the site? If yes, please attach copies.

_____ Yes No

5. Have any unauthorized releases of hazardous substances occurred at any facility at the site which resulted in notification of the EPA's National Response Center?

_____ Yes No

6. Is any material containing asbestos or lead paint located at the site? If yes, please attach information concerning State and federal regulatory compliance.

_____ Yes No

7. Is there any equipment (electrical transformers, etc.) containing polychlorinated biphenyls (PCB) on the site? If yes, please attach a description of the equipment.

_____ Yes No

8. Are there underground or above ground storage tanks on the site? If yes, please attach a detailed description, including the number of underground storage tanks on the site, whether the tanks have been inspected (or removed) and the results of such inspections.

_____ Yes No

9. Has the site been tested for radon? If yes, please attach results.

_____ Yes No

10. Have there been, or are there now any environmental investigations by federal, State or local government agencies that could affect the site in question? If yes, please attach available information.

_____ Yes No

The applicant acknowledges that this certification regarding hazardous substances and/or waste is a material representation of fact upon which EDA relies when making and executing an award. EDA reserves the right to terminate any award made in conjunction with the representations contained herein if, at any time during the useful life of the project, EDA becomes aware of the presence of hazardous

Appendix A: Applicant Certification Clause

materials or waste at the site, or that hazardous materials or waste have been inappropriately handled thereon.

Further, if it is determined at any time that the presence of hazardous materials or waste, or handling thereof, has been misrepresented, EDA may pursue other available legal remedies against the applicant.

City of Marquette, Michigan

Applicant's Name

Dennis Stachewicz, Community Development Director

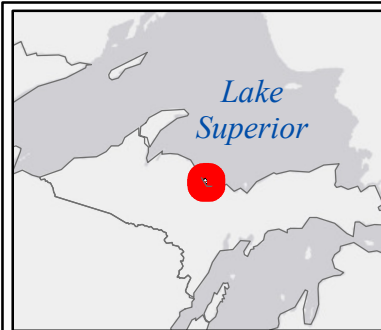
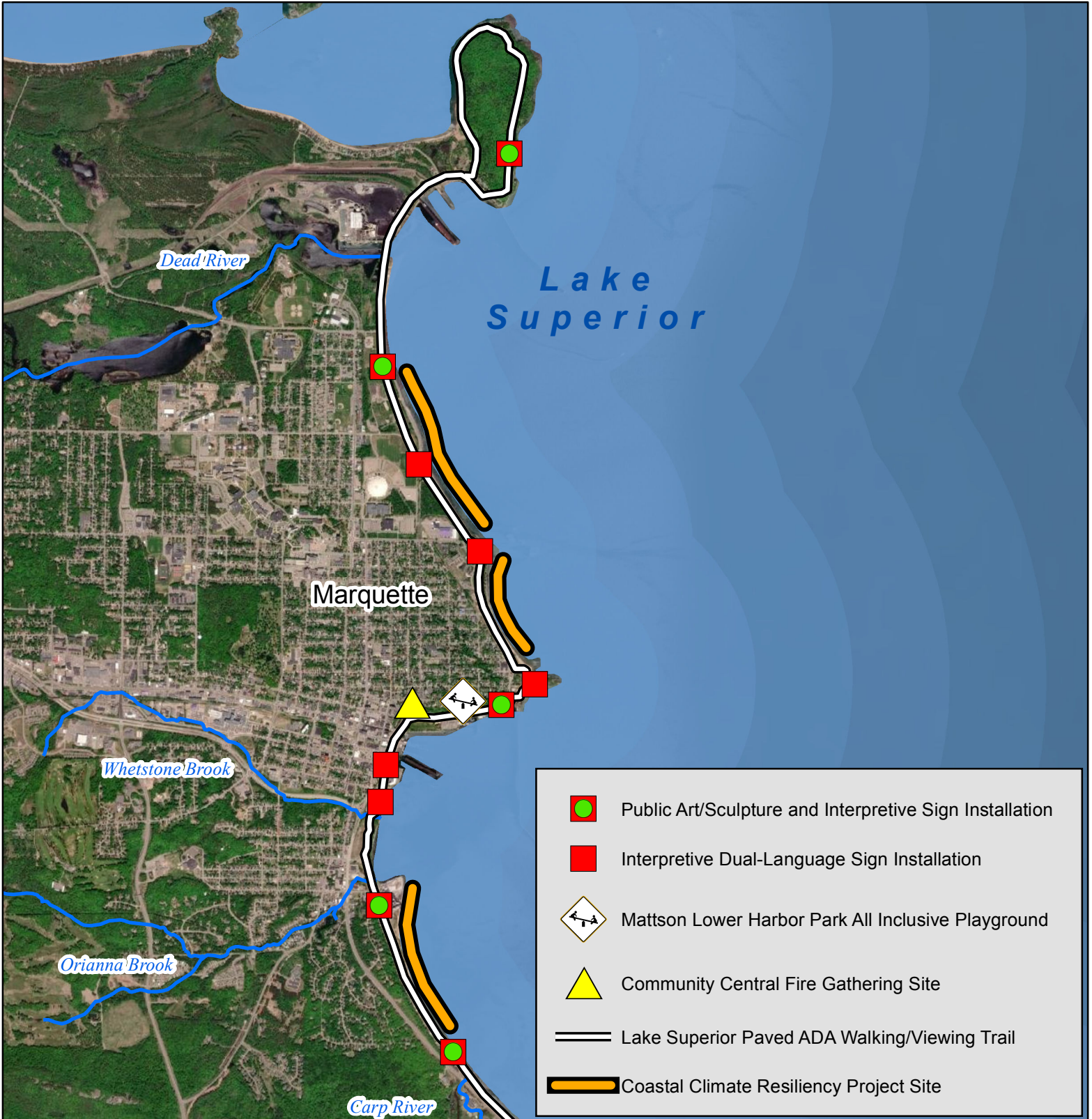
Name and Title of Applicant's Authorized Representative

1/31/2022

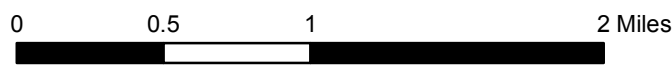
Signature of Applicant's Authorized Representative

Date

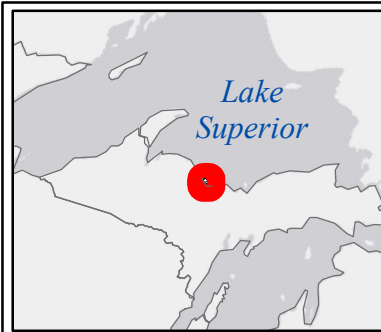
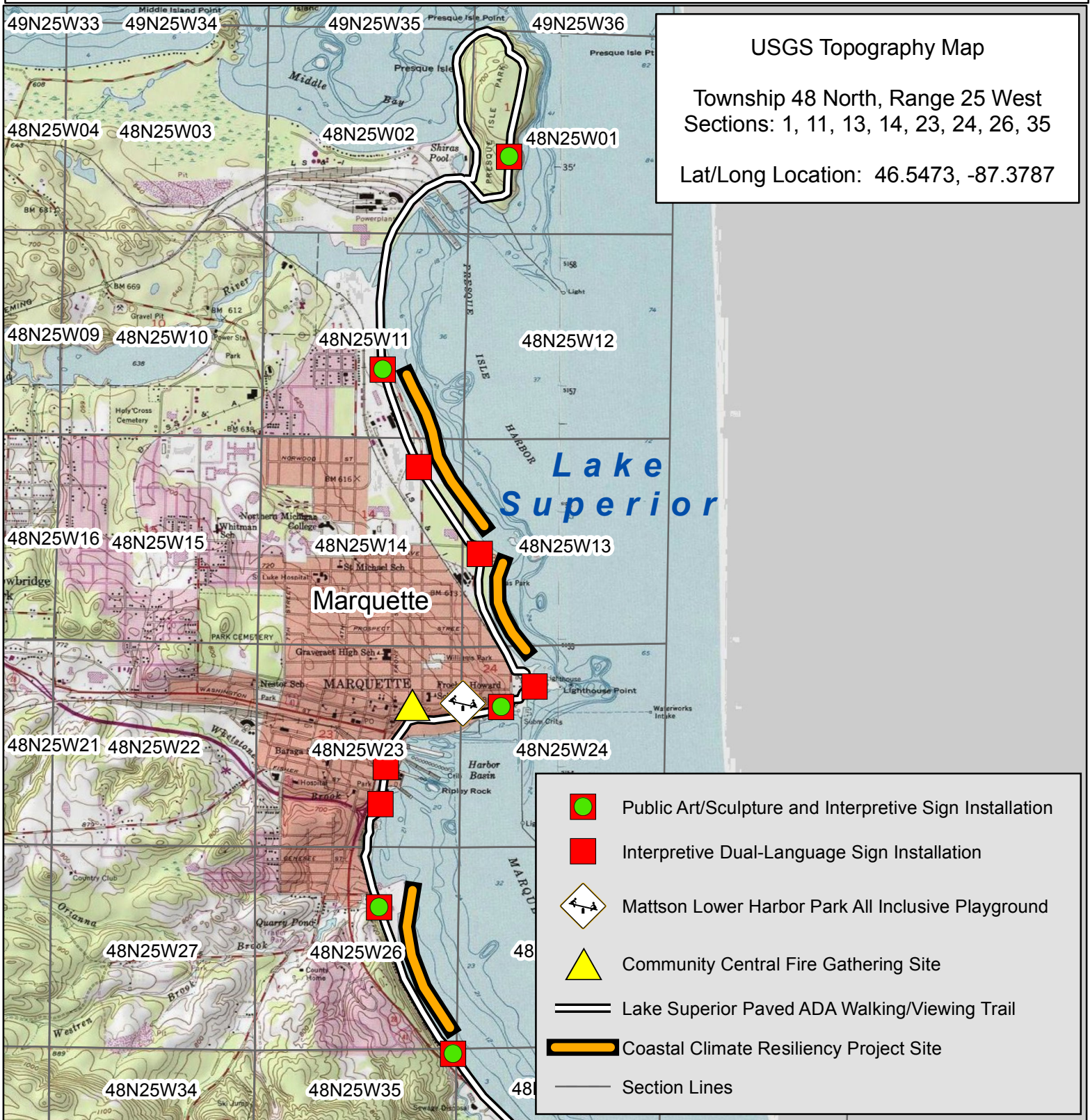
EDA Lake Superior Cultural Arts Trail and Nature-Based Green Infrastructure



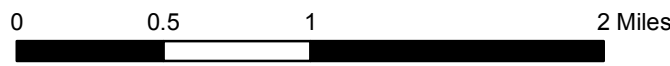
Innovate Marquette
SMARTZONE
 INCUBATE • NAVIGATE • ACCELERATE



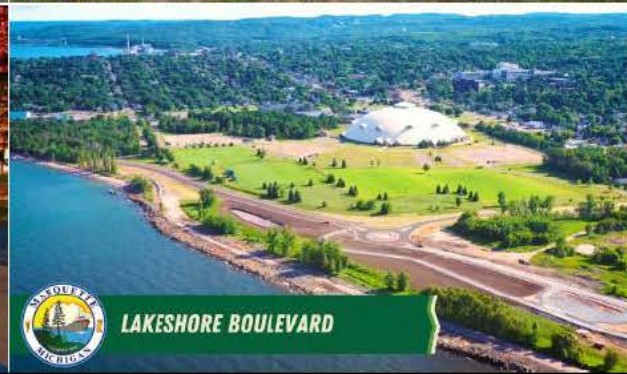
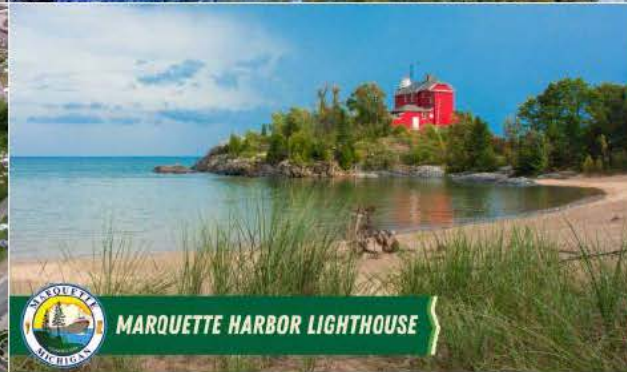
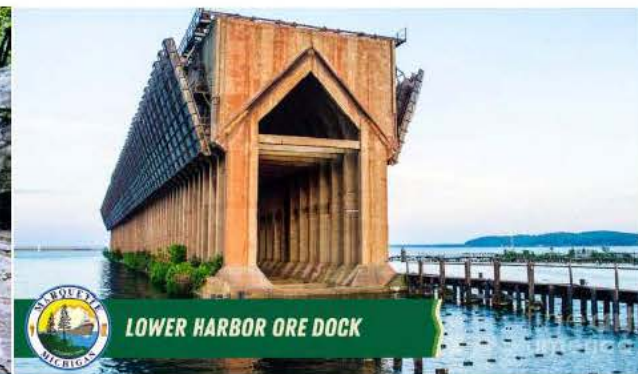
EDA Lake Superior Cultural Arts Trail and Nature-Based Green Infrastructure



Innovate Marquette
SMARTZONE
 INCUBATE • NAVIGATE • ACCELERATE



Photos Along Proposed Cultural Arts Trail







Concept Design: Lake Superior Cultural Arts Trail



Marquette Climate Impacts/Lakeshore Erosion





Lee J. Shirey
Economic Development Representative for Michigan
U.S. Department of Commerce
Economic Development Administration
230 S. Dearborn Street, Suite 3280
Chicago, IL 60604

Dear Mr. Shirey,

The Central Upper Peninsula Planning and Development Regional Commission (CUPPAD) is pleased to provide this letter of support for the City of Marquette's proposal to the U.S. Economic Development Administration's FY 2021 American Rescue Plan Act Travel, Tourism, and Outdoor Recreation funding opportunity.

This proposed EDA project will transform the City-owned Great Lakes shoreline into a tourism destination by; 1) creating the new Lake Superior Cultural Arts Trail along 8 miles of existing, ADA-accessible waterfront hiking trail, and 2) improving public access with nature-based green infrastructure to stabilize and restore prioritized coastal erosion sites and degraded areas immediately adjacent to the proposed Cultural Arts Trail. This innovative project is designed to increase sustainable economic development through increased tourism and longer local stays due to the Lake Superior Cultural Arts Trail. Project partners include but are not limited to; Marquette Community Development, Marquette Arts and Culture, Marquette Economic SmartZone, Keweenaw Bay Indian Community, and the Superior Watershed Partnership.

We look forward to the opportunity to contribute to this project and it is well aligned with the primary goals of the region's Comprehensive Economic Development Strategy which states that the central region will support tourism initiatives that are accessible to all and preserve the natural resources of Lake Superior. Restoring the coastal erosion and degraded areas with nature-based infrastructure is essential to our many trails and networks. The ADA accessible arts trail will be a great addition to everything Marquette has to offer!

Sincerely,

Dotty LaJoye
Executive Director
dlajoye@cuppadd.org
CUPPAD



County of Marquette

Courthouse Complex
234 W. Baraga Avenue
Marquette, Michigan 49855
Fax: (906) 225-8155
www.co.marquette.mi.us



County Administrator
225-8151
Finance & Accounting
225-8175
Human Resources & Risk
225-8162
Information Systems
225-8170

January 31, 2022

Lee J. Shirey
Economic Development Representative for Michigan
U.S. Department of Commerce
Economic Development Administration
230 S. Dearborn Street, Suite 3280
Chicago, IL 60604

Dear Mr. Shirey,

I am pleased to provide this letter of support for the City of Marquette's proposal to the U.S. Economic Development Administration's FY 2021 American Rescue Plan Act Travel, Tourism, and Outdoor Recreation funding opportunity.

This proposed EDA project will transform the City-owned Great Lakes shoreline into a tourism destination by; 1) creating the new Lake Superior Cultural Arts Trail along 8 miles of existing, ADA-accessible waterfront hiking trail, and 2) improving public access with nature-based green infrastructure to stabilize and restore prioritized coastal erosion sites and degraded areas immediately adjacent to the proposed Cultural Arts Trail. This innovative EDA project is designed to increase sustainable economic development through increased tourism and longer local stays due to the Lake Superior Cultural Arts Trail! Project partners include but are not limited to; Marquette Community Development, Marquette Arts and Culture, Marquette Economic SmartZone, Keweenaw Bay Indian Community and the Superior Watershed Partnership.

The project is well aligned with the primary goals of the region's Comprehensive Economic Development Strategy and will help the region recover from the economic impacts resulting from closure of two coal fired power plants and the Covid-19 pandemic by creating an ADA accessible Lake Superior Cultural Arts Trail that includes public art installations, is free and open to the public and grounded in local history and heritage, while implementing nature-based green infrastructure to stabilize and restore prioritized coastal erosion sites and degraded areas immediately adjacent to the proposed Cultural Arts Trail.

Please feel free to contact me regarding our support.

Sincerely,

Scott Erbisch
County Administrator/Controller

Dear Mr. Shirey,

The Innovate Marquette SmartZone is pleased to provide this letter of support for the City of Marquette's proposal to the U.S. Economic Development Administration's FY 2021 American Rescue Plan Act Travel, Tourism, and Outdoor Recreation funding opportunity.

This proposed EDA project will transform the City-owned Great Lakes shoreline into a tourism destination by; 1) creating the new Lake Superior Cultural Arts Trail along 8 miles of existing, ADA-accessible waterfront hiking trail, 2) improving public access with nature-based green infrastructure to stabilize and restore prioritized coastal erosion sites and degraded areas immediately adjacent to the proposed Cultural Arts Trail and creating a safe tech enabled nomad and remote worker accessible beachfront. This innovative EDA project is designed to increase sustainable economic development through increased tourism and longer local stays due to the Lake Superior Cultural Arts Trail! Project partners include but are not limited to; Marquette Community Development, Marquette Arts and Culture, Marquette Economic SmartZone, Keweenaw Bay Indian Community and the Superior Watershed Partnership.

The project is well aligned with the primary goals of the region's Comprehensive Economic Development Strategy and will help the region recover from the economic impacts resulting from closure of two coal fired power plants and the Covid-19 pandemic by creating an ADA accessible Lake Superior Cultural Arts Trail that includes public art installations, is free and open to the public and grounded in local history and heritage, while implementing nature-based green infrastructure to stabilize and restore prioritized coastal erosion sites and degraded areas.

Please feel free to contact me regarding our support.

Sincerely,



Joseph A. Thiel
CEO



**Keweenaw Bay Indian Community
Natural Resources Department**



October 29, 2021

Dear Ms. Morin,

On behalf of the Keweenaw Bay Indian Community Natural Resources Department (KBIC NRD), I am pleased to provide this letter in support of your grant application to the 2021 EDA Competitive Tourism Grants Program.

Specifically, KBIC NRD supports the creation of a Lake Superior Cultural Arts Trail honoring regional Indigenous Anishinaabe traditions with interpretive signage and public art linking parks, historic sites and natural features along Marquette's popular multi-use coastal pathway. KBIC NRD staff look forward to reviewing and providing insight regarding project design and narrative as needed. Please do not hesitate to contact me if you require any additional information regarding KBIC NRD support for this important cultural arts initiative.

Sincerely,

Shannon DesRochers
Great Lakes Resource Specialist
Keweenaw Bay Indian Community
Natural Resources Department
14359 Pequaming Rd.
L'Anse, MI 49946
Cell: (906)201-0027
Office: (906)524-5757 ext. 4231
sdesrochers@kbic-nsn.gov





SUPERIOR WATERSHED PARTNERSHIP

LAKE SUPERIOR • LAKE MICHIGAN • LAKE HURON

2 Peter White Drive • Presque Isle Park • Marquette, Michigan 49855
Phone: (906) 228-6095 • Fax: (906) 228-6863 • www.superiorwatersheds.org

January 31, 2022

Lee J. Shirey
Economic Development Representative for Michigan
U.S. Department of Commerce
Economic Development Administration
230 S. Dearborn Street, Suite 3280
Chicago, IL 60604

Dear Mr. Shirey,

The Superior Watershed Partnership (SWP) is pleased to provide this letter of support for the City of Marquette's proposal to the U.S. Economic Development Administration's FY 2021 American Rescue Plan Act Travel, Tourism, and Outdoor Recreation funding opportunity.

This proposed EDA project will transform the City-owned Great Lakes shoreline into a tourism destination by; 1) creating the new Lake Superior Cultural Arts Trail along 8 miles of existing, ADA-accessible waterfront hiking trail, and 2) improving public access with nature-based green infrastructure to stabilize and restore prioritized coastal erosion sites and degraded areas immediately adjacent to the proposed Cultural Arts Trail. This innovative project is designed to increase sustainable economic development through increased tourism and longer local stays due to the Lake Superior Cultural Arts Trail. Project partners include but are not limited to; Marquette Community Development, Marquette Arts and Culture, Marquette Economic SmartZone, Keweenaw Bay Indian Community, and the SWP. The SWP is pleased to provide their Great Lakes Climate Corps (GLCC) as local match to support this important sustainable tourism project.

We look forward to the opportunity to contribute to this project and it is well aligned with the primary goals of the region's Comprehensive Economic Development Strategy which states that the central region will support tourism initiatives that are accessible to all and preserve the natural resources of Lake Superior. Restoring the coastal erosion and degraded areas with nature-based infrastructure is essential to our many trails and networks. The ADA accessible arts trail will be a great addition to everything Marquette has to offer!

Sincerely,

Carl Lindquist, Executive Director