



120 W Main Street
West Dundee, IL 60118

Corporate Headquarters
6575 West Loop South, Suite 300
Bellaire, TX 77401
Main: 713.520.5400

September 22, 2021

Mik Kilpela
City Engineer
City of Marquette
1100 Wright St.
Marquette, MI 49855

Dear Mik:

Thank you for the opportunity to provide this proposal for ecological and design consulting services for the MCMP area of the Marquette Shoreline Restoration project. For your review, below is our understanding of your request for services.

We are confident you will find that RES provides exceptional expertise, service, and value. We look forward to beginning work with you on this project. Please call with any questions regarding this proposal and supporting documents.

Thank you,

A handwritten signature in black ink that reads "Mark J. O'Leary". The signature is written in a cursive style with a large, looped 'y' at the end.

Mark O'Leary, Principal Ecologist, Client Solutions Manager
moleary@res.us | 608.897.8641



Project Understanding

Work includes preparing Construction Documents for the MCMP area of the Marquette Shoreline Restoration project outlined in Figure 1, below.

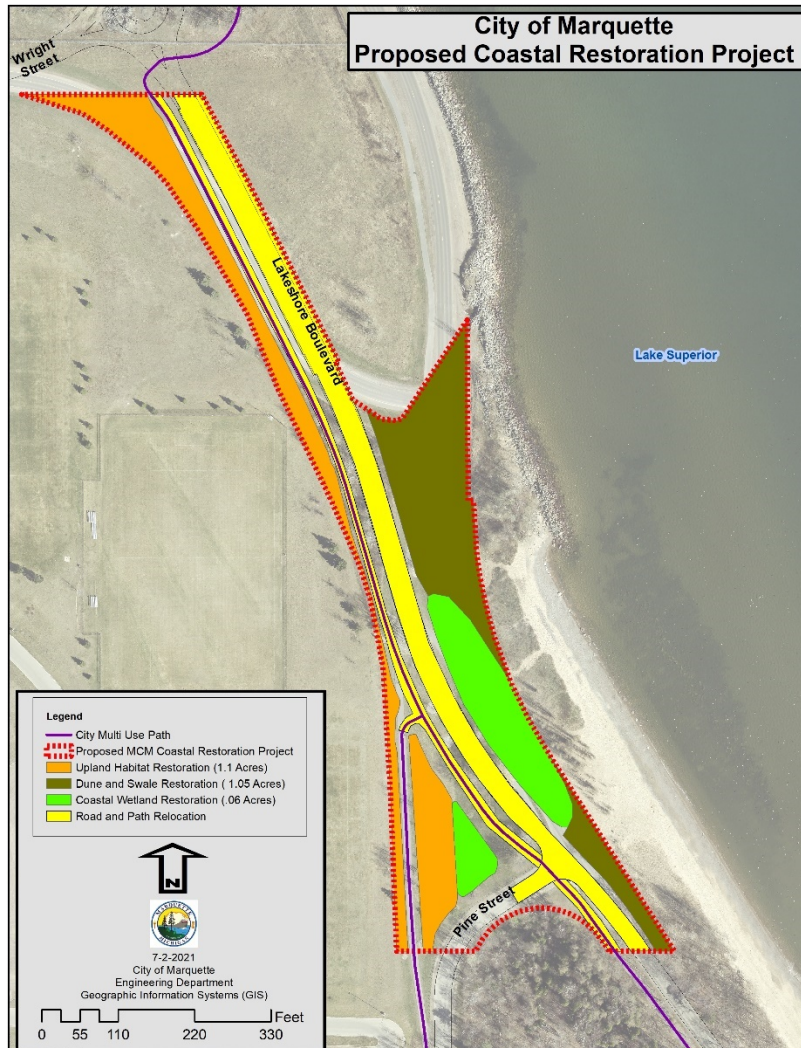


Figure 1 Project area

In addition, we understand:

- Construction documents will be based on the diagram in Figure 1 and current final design plans for the Marquette Shoreline Restoration project dated 7/21/2021.
- Base information of roadway, trail and utility layout is based on design files provided by the City of Marquette and observation of aerial imagery by RES.
- Existing topography of the site based on the lidar data provided by GEI completed December 2020.
- Dune restoration specifications to be provided by Baird.
- SWP will handle hiring a contractor to complete the work.
- The total construction budget is \$140,000.

Description of Work

Task 1 – Revise Marquette Shoreline Final Design Documents

- RES will remove all site improvements within the MCMP boundary from the current final design documents including layout, grading, soils, landscape, and erosion control elements.



- RES will update quantities and the opinion of probable construction cost (OPCC) to reflect plan changes.

Task 2 – Construction Documents

- RES will prepare construction documents for the MCMP area. Anticipated sheets include:
 - Existing Conditions Plan
 - Layout and Grading Plan
 - Landscape Plan
 - Erosion Control Plan
 - Site and Landscape Details
- RES will prepare specifications and special provisions for project elements.
- RES will prepare an OPCC and modify the plan if needed to meet the project budget.

Schedule

The Project Team is prepared to execute and complete services outlined in this proposal as determined with the Client.

Additional Services

Scope and fees described here are based on the shoreline, pedestrian paths and grading and landscape design direction remaining unchanged from the Preliminary Design documents. If significant features are added or removed from the project due to direction from SWP, the City, comments during the permitting process or budgetary reasons, RES will send a proposal for additional services.

Billing Information

The Client shall compensate RES for the services described above for a lump sum fee broken down as follows:

Task 1 – Revise Marquette Shoreline Final Design Documents:	\$2,800
Task 2 – Construction Documents:	\$6,800
Total:	\$9,600

Reimbursable expenses are included in the fee.

In the event the parties enter into a contract, the terms of that contract will preside.